
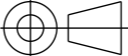


	1	2	3	4	5	6	7	8					
A													
B													
C													
D													
E					--A	UPDATED ACCORDING TO WP --B		05 Sep 23					
					---	FIRST EDITION		10 Jun 22					
F					REV No.	DETAILS OF MODIFICATION	SHEET No.	GRID REF	DATE	DCR No.			
					DRW CAD ID	68H9FZ	APPROVED BY	ITER Organization		LEGAL OWNER			
					LINKED EV5 PT ID	4U24XY	VELTRIP	INTERNAL USE		 <small>china EU india japan korea russia USA</small>			
					LINKED 3D ID	6FQ3VK	TECHNICAL REF	When received pursuant to a contract or agreement, the confidentiality clause therein shall be applicable.					
					PBS TITLE	Neutral Beam H&CD System HNB01 injector Passive magnetic shield	ELOUZA	When received during tender phase treat as confidential.					
					DATE OF ISSUE	05 Sep 23	PT MATURITY	DD	PT VERSION	--B	DRAWING TITLE		
					DR STATUS	W	SCALE	1:1	PT STATUS	W	BOTTOM_PMS_06_OUTSIDE MODIFICATIONS_SHEET		
					THIRD ANGLE PROJECTION			QUALITY CLASS	SIC-1	DOCUMENT TYPE	Part Drawing		
					FORMAT	A3	PBS NUMBER	53 01 PM	DRAWING NUMBER	06326901	SHEET	N°OF SHEETS	REVISION
										03			--A

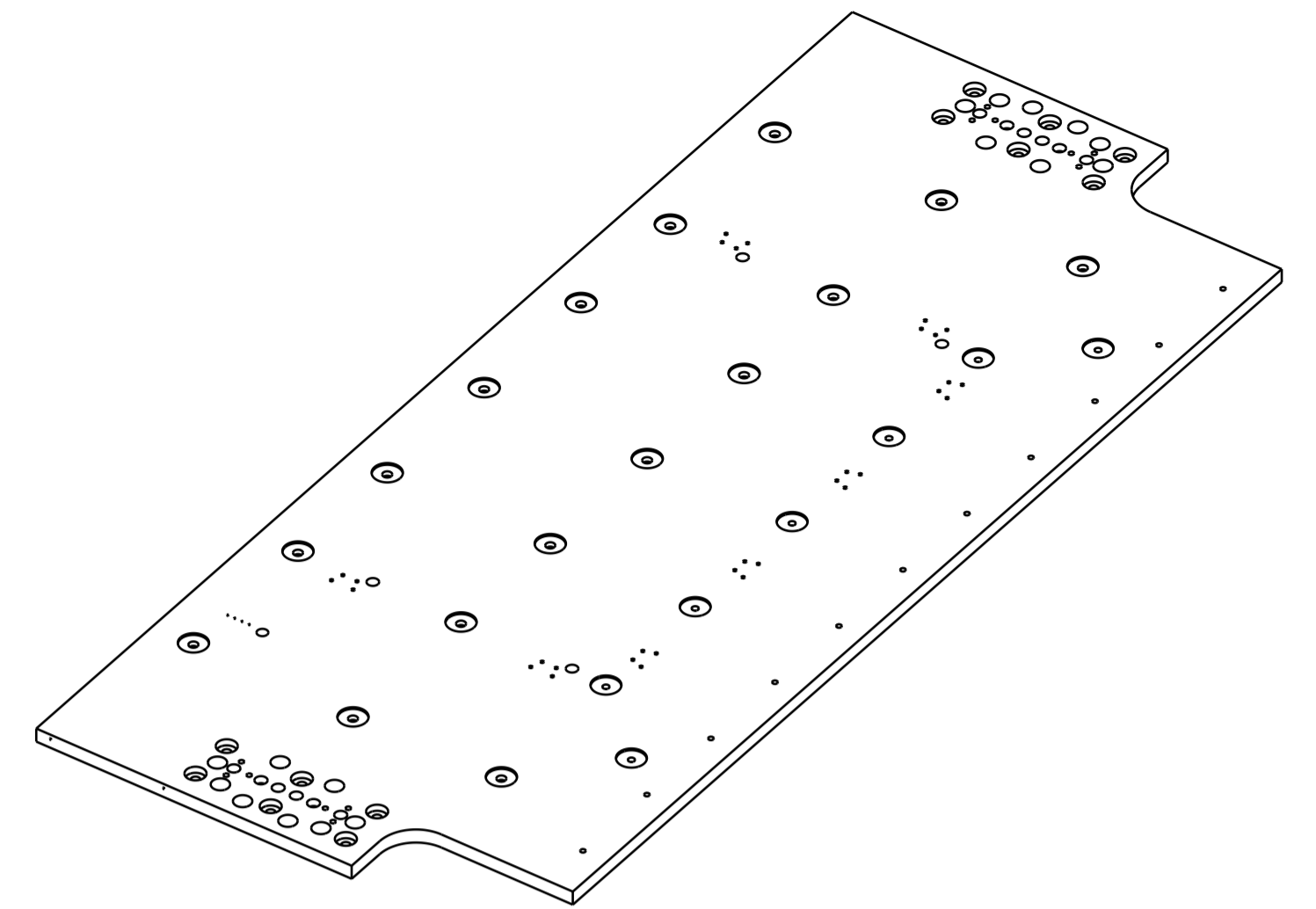
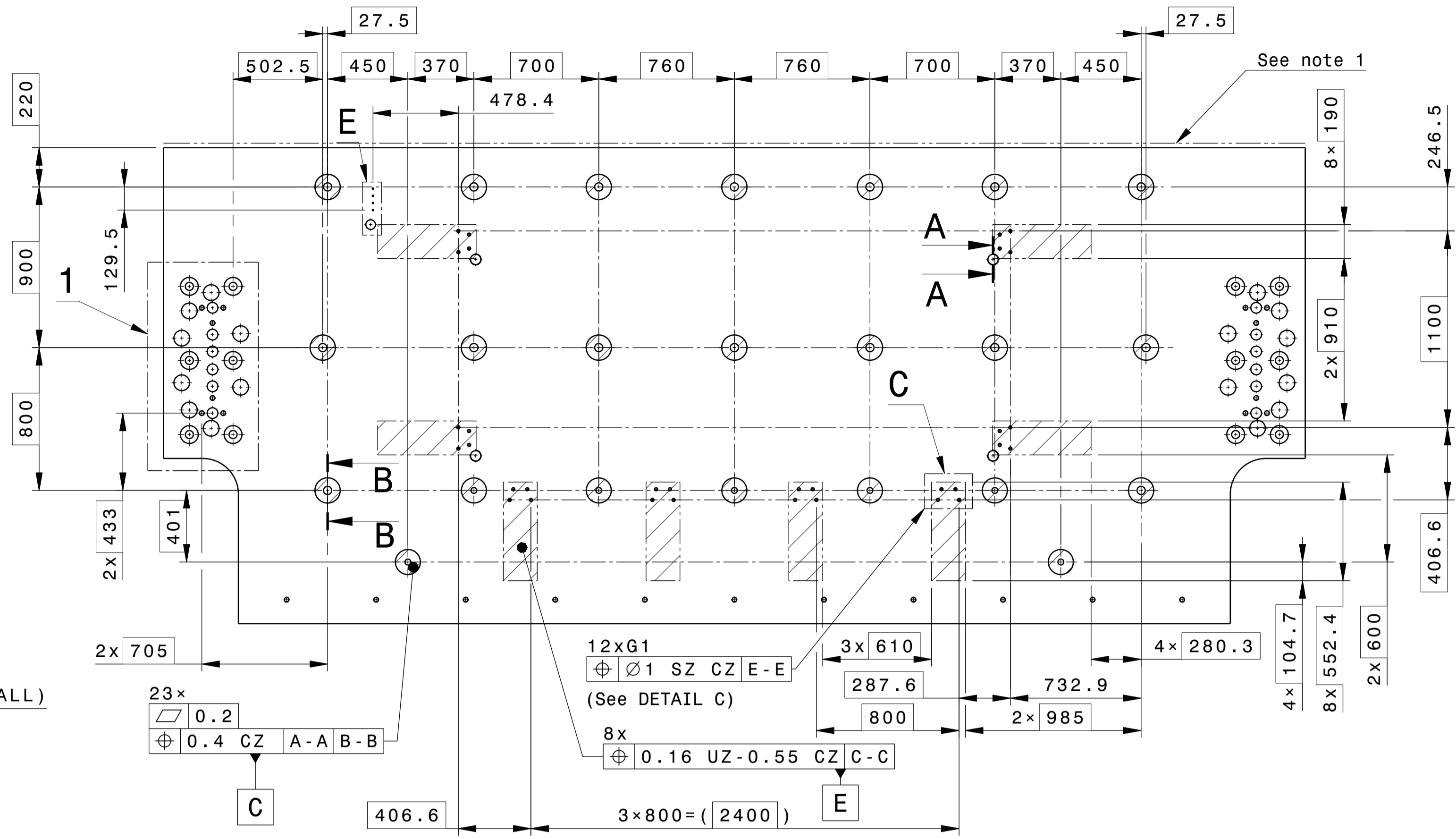
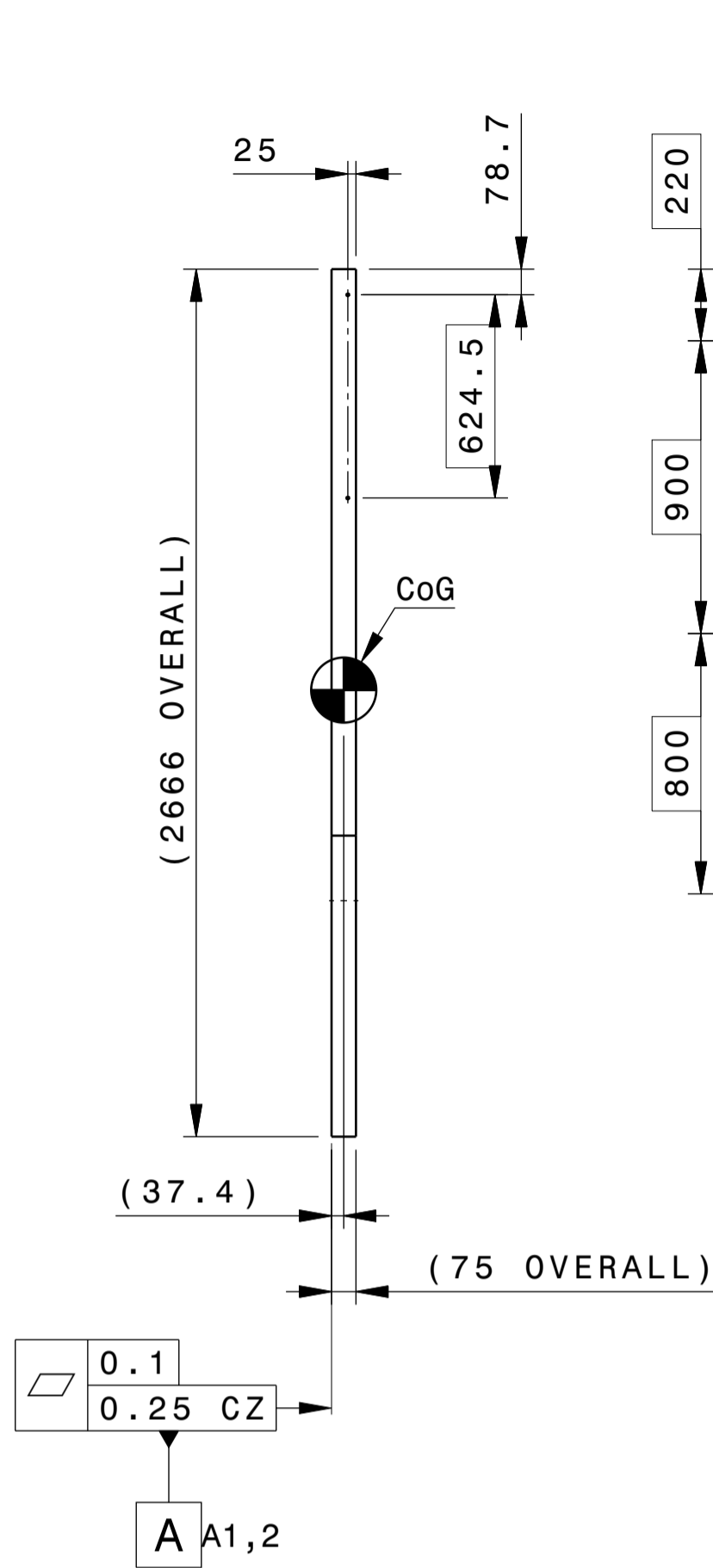
Spacereservation for the banner

Spacereservation for the banner

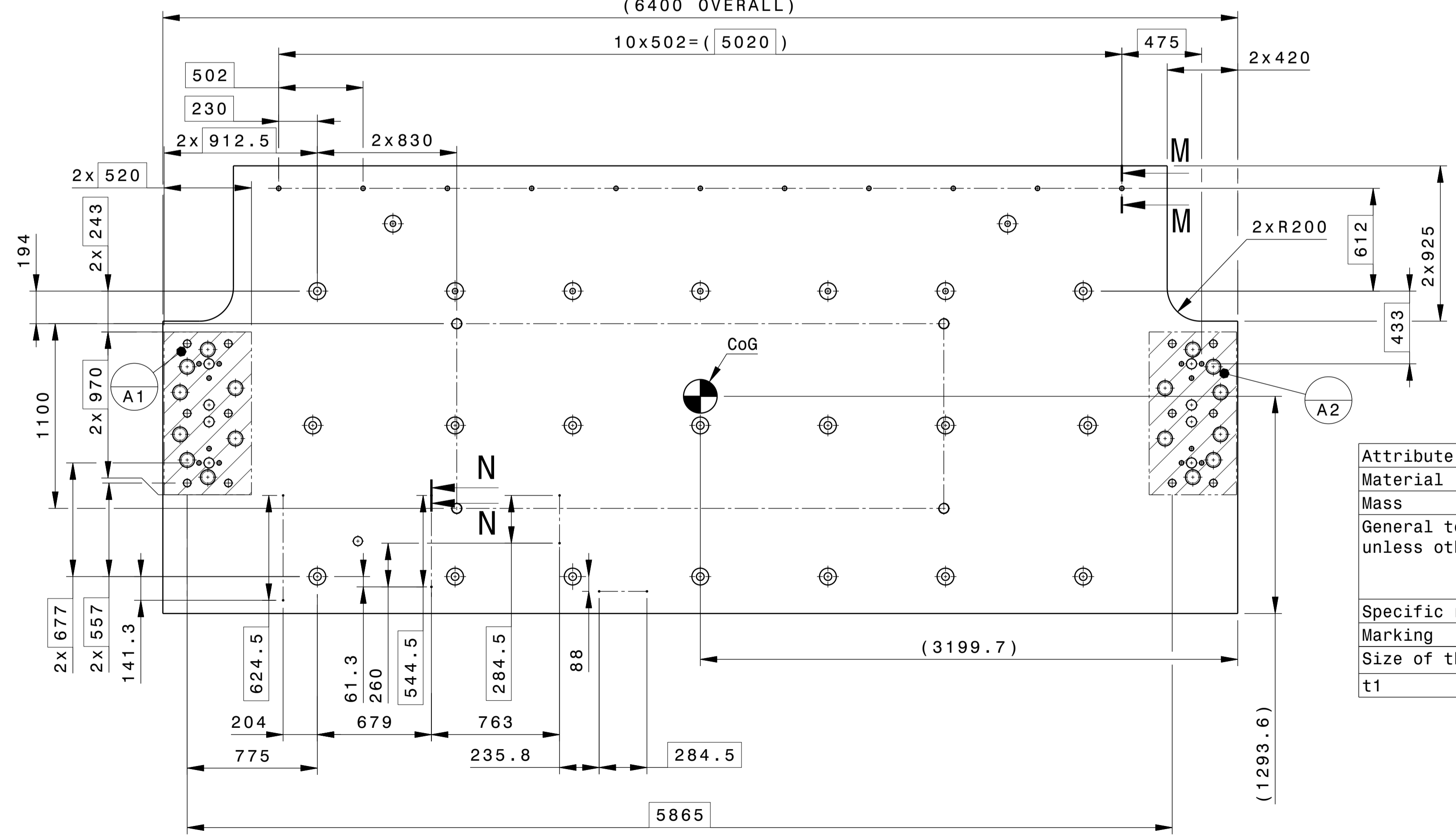
LEFT VIEW

FRONT VIEW

ISOMETRIC VIEW

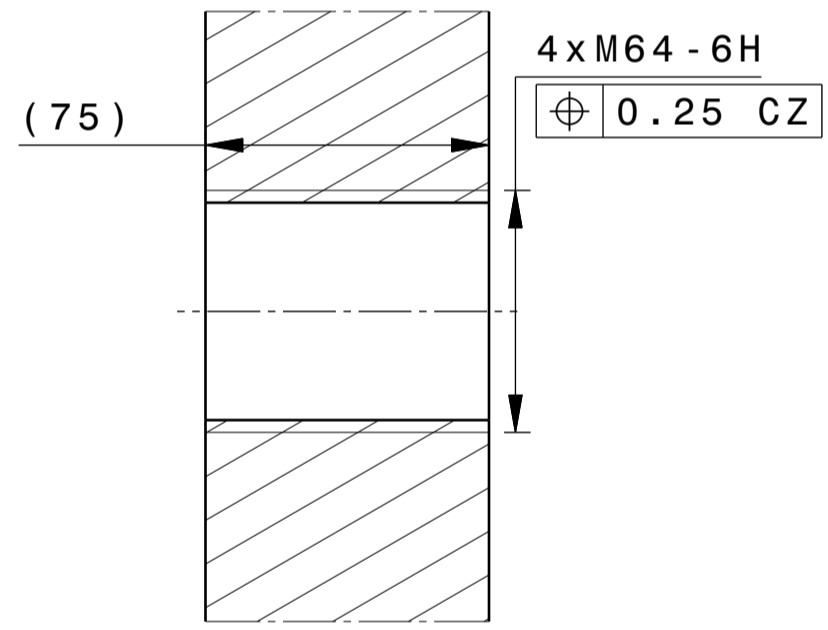


REAR VIEW



SECTION VIEW A-A  
Scale: 1:2

APPLICABLE 4 TIMES



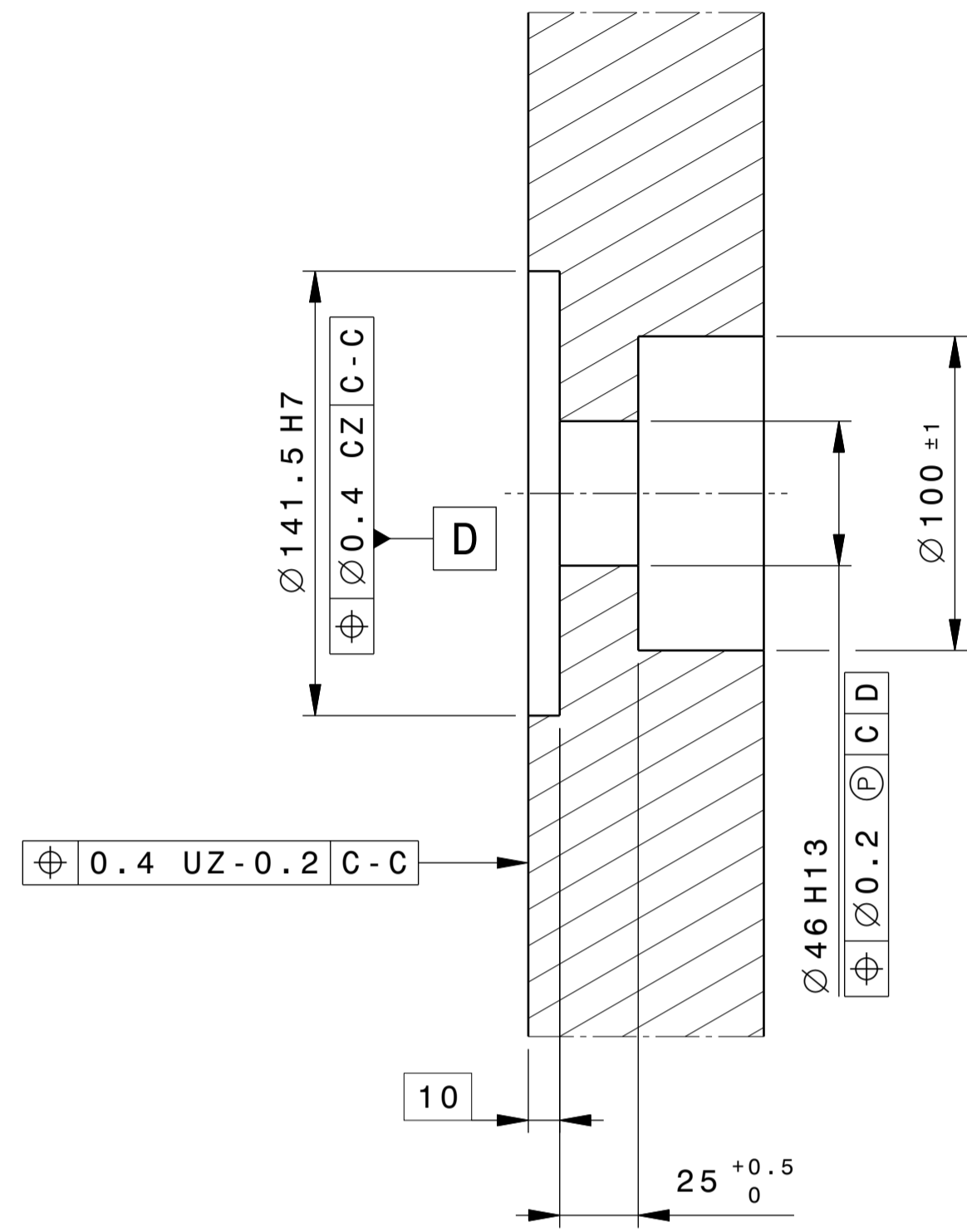
- Note :
- 1-Keeping an extra length is required to custom machine see to the drawing BOTTOM\_PMS\_05-06\_ASSY
  - 2-Counter drilled at the first factory assembly
  - 3-All dimensions could be controlled under constraints. Tooling could be used to achieve the constraints.

Attribute	Value	Remarks				
Material	S235					
Mass	9382kg					
General tolerances, unless otherwise stated	ISO 22081:2021 General geometric tolerance to be applied also to linear and angular sizes	Tolerancing follow ISO 8015				
Specific requirements	Break sharp edges					
Marking						
Size of the feature	≤100	100<S<500	500<S<1000	1000<S<3000	3000<S<6000	≥6000
t1	0.2	0.5	0.8	1	2	3

DRW CAD ID	68H9FZ	APPROVED BY	ITER Organisation	LOCAL OWNER
LINKED REV PT ID	4U24XY	VELTRIP	INTERNAL USE	
LINKED 3D ID	6FQ3VK	ELOUZA	When received pursuant to a contract or agreement, the confidentiality clause therein shall be applicable. When received during tender phase treat as confidential.	
DRW TITLE	Neutral Beam H&D System HN801 injector Passive magnetic shield	DRAWN BY	IRAZOON	DRAWING TITLE
DATE OF ISSUE	05 Sep 23	PT MAJORITY	DD	PT VERSION
DR STATUS	W	SCALE	1:20	PT STATUS
THIRD ANGLE PROJECTION	FORMAT		PMS NUMBER	DRAWING NUMBER
SHEET		N° OF SHEETS		REVISION
A1		53 01 PM		06326902 03 --A

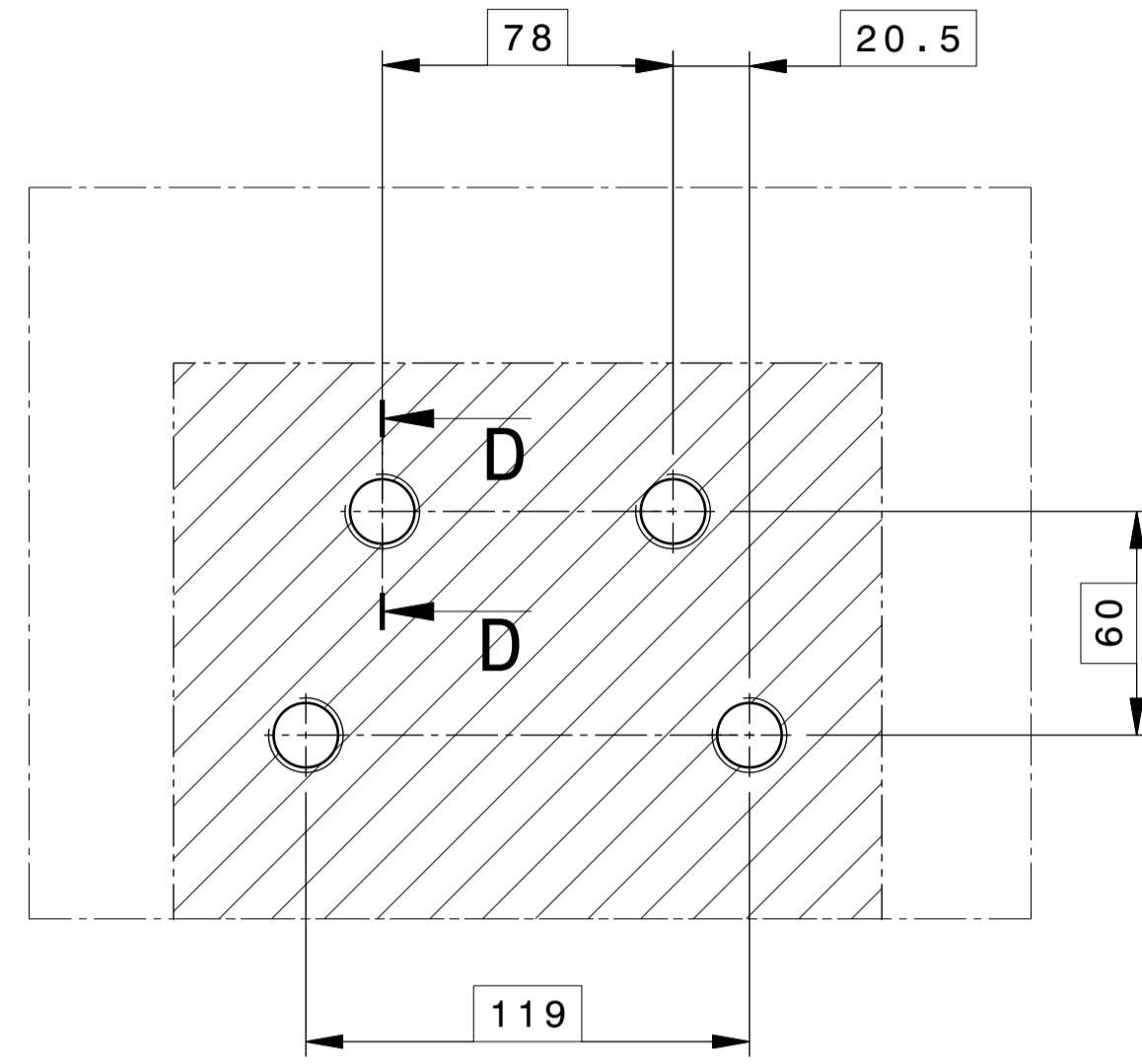
**SECTION VIEW B-B**

APPLICABLE 23 TIMES

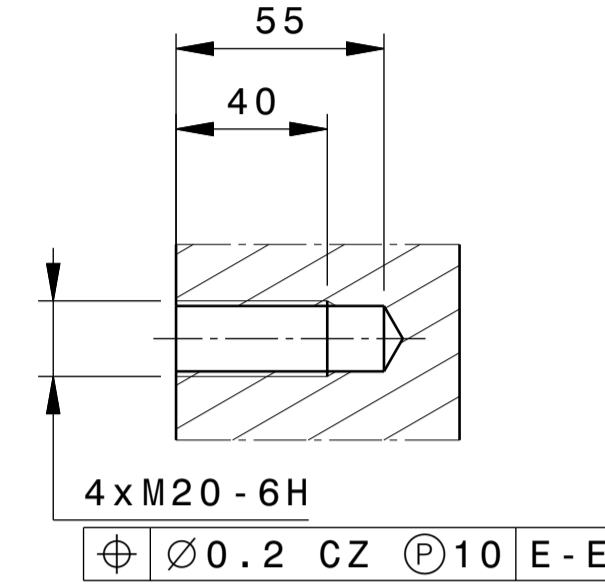


**DETAIL C**

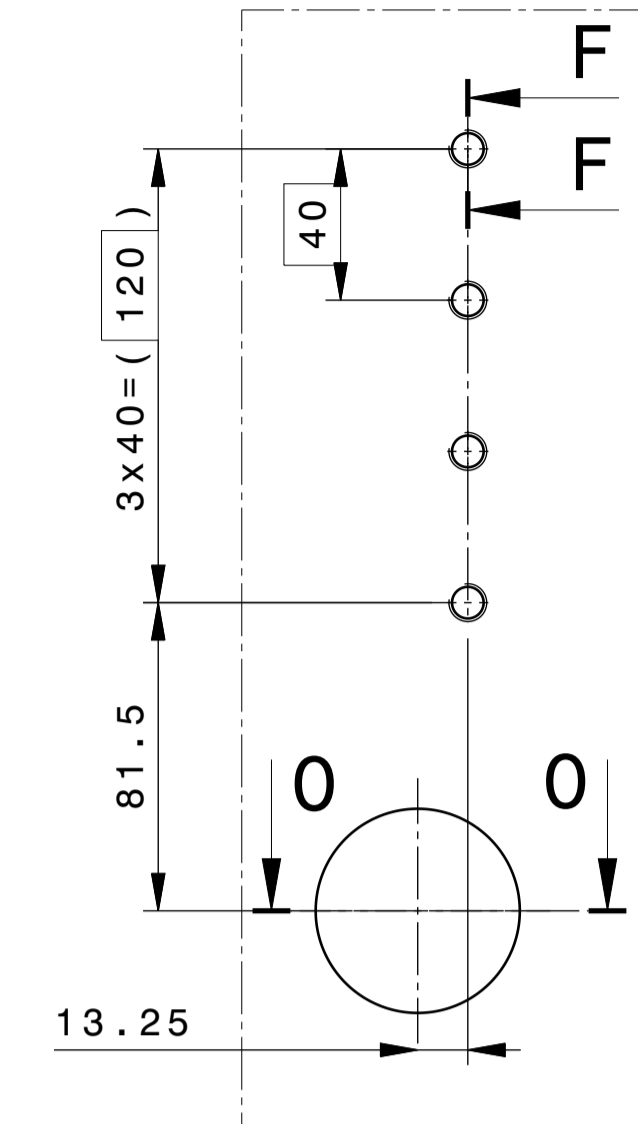
GROUP G1, APPLICABLE 8 TIMES



**SECTION VIEW D-D**

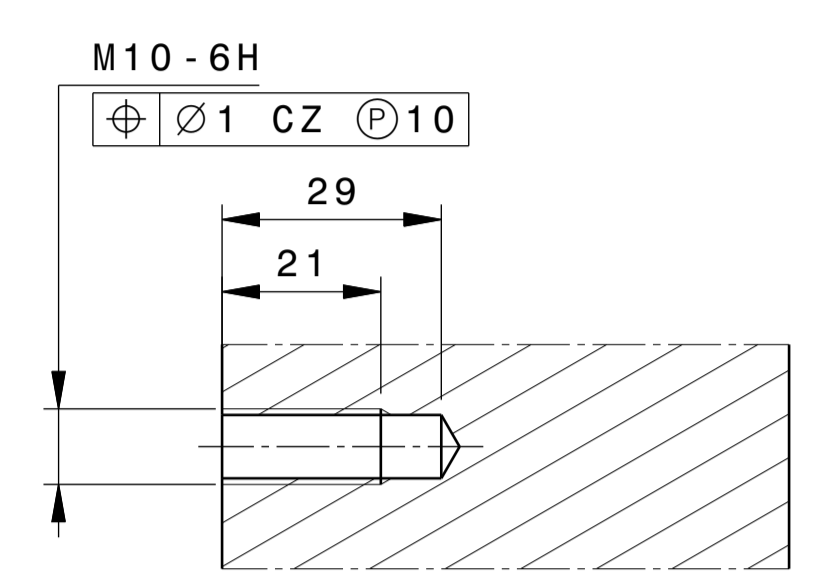


**DETAIL E**



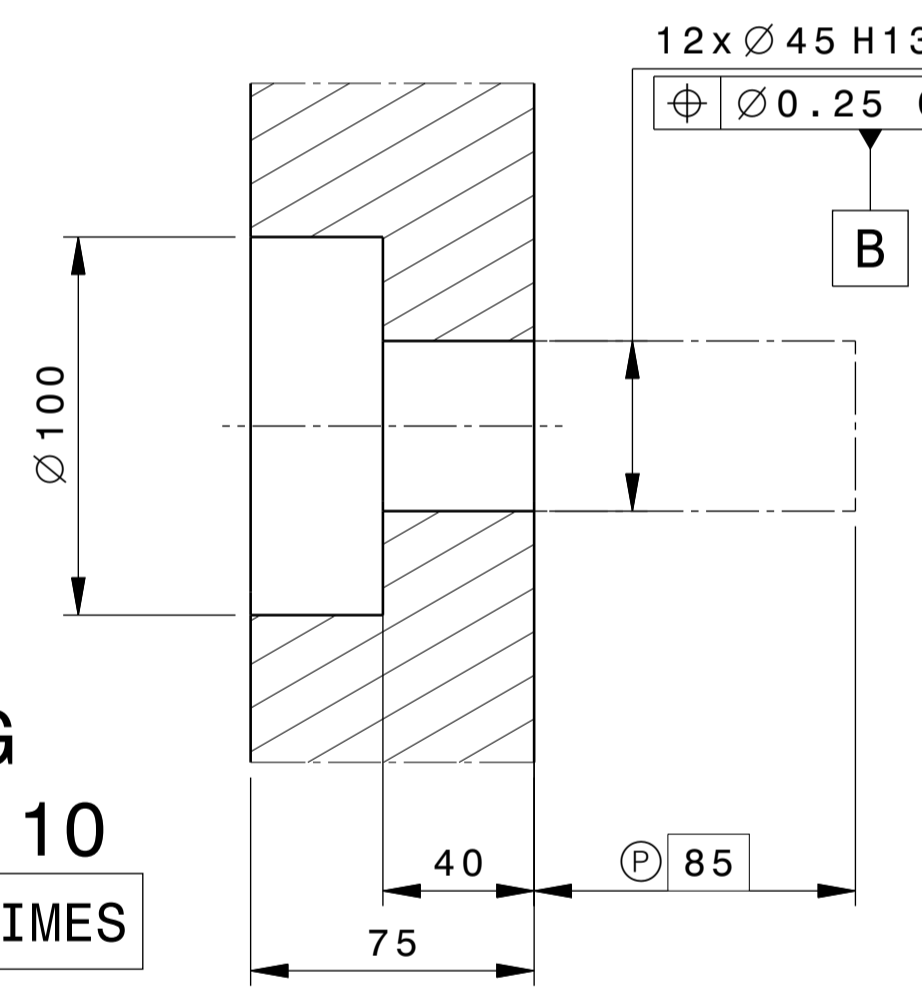
**SECTION VIEW F-F**

Scale: 1:1  
APPLICABLE 4 TIMES



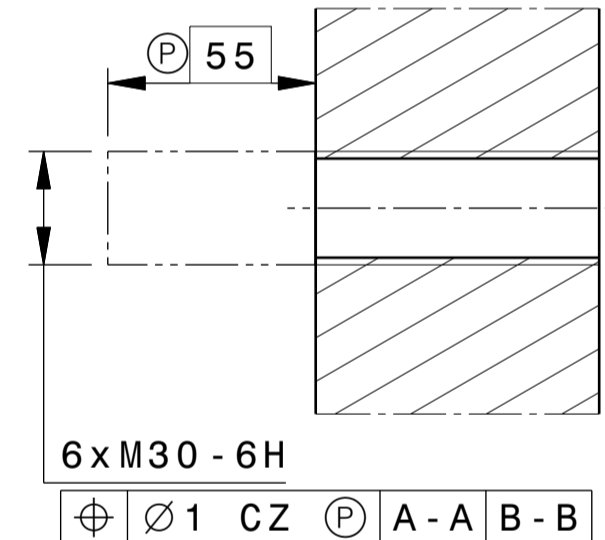
**SECTION VIEW H-H**

APPLICABLE 6 TIMES



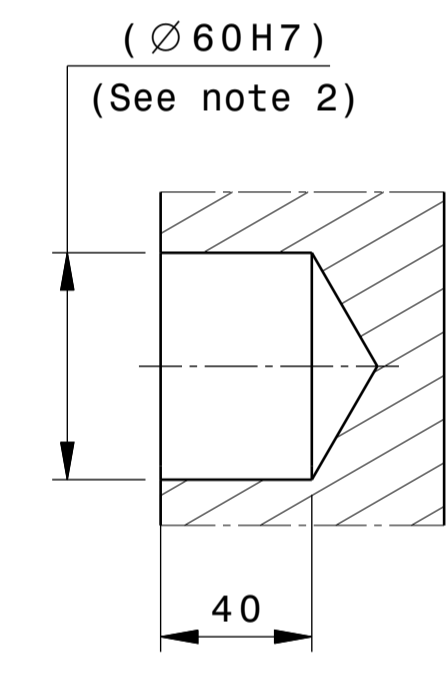
**SECTION VIEW I-I**

APPLICABLE 6 TIMES



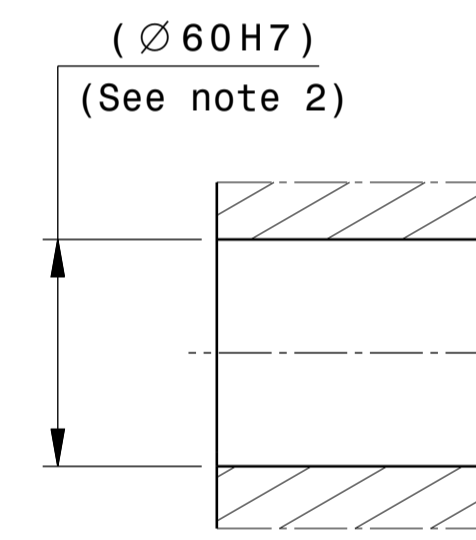
**SECTION VIEW J-J**

APPLICABLE 2 TIMES



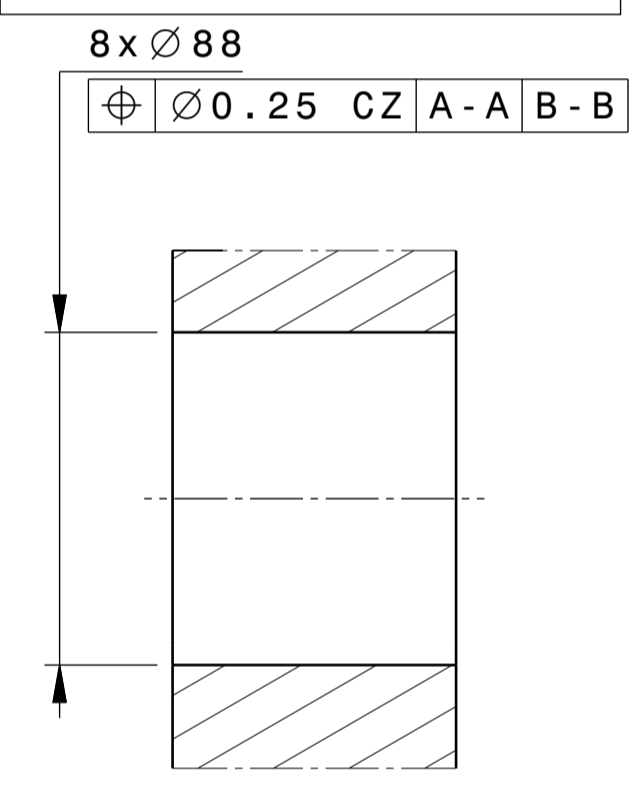
**SECTION VIEW K-K**

APPLICABLE 4 TIMES



**SECTION VIEW L-L**

APPLICABLE 8 TIMES

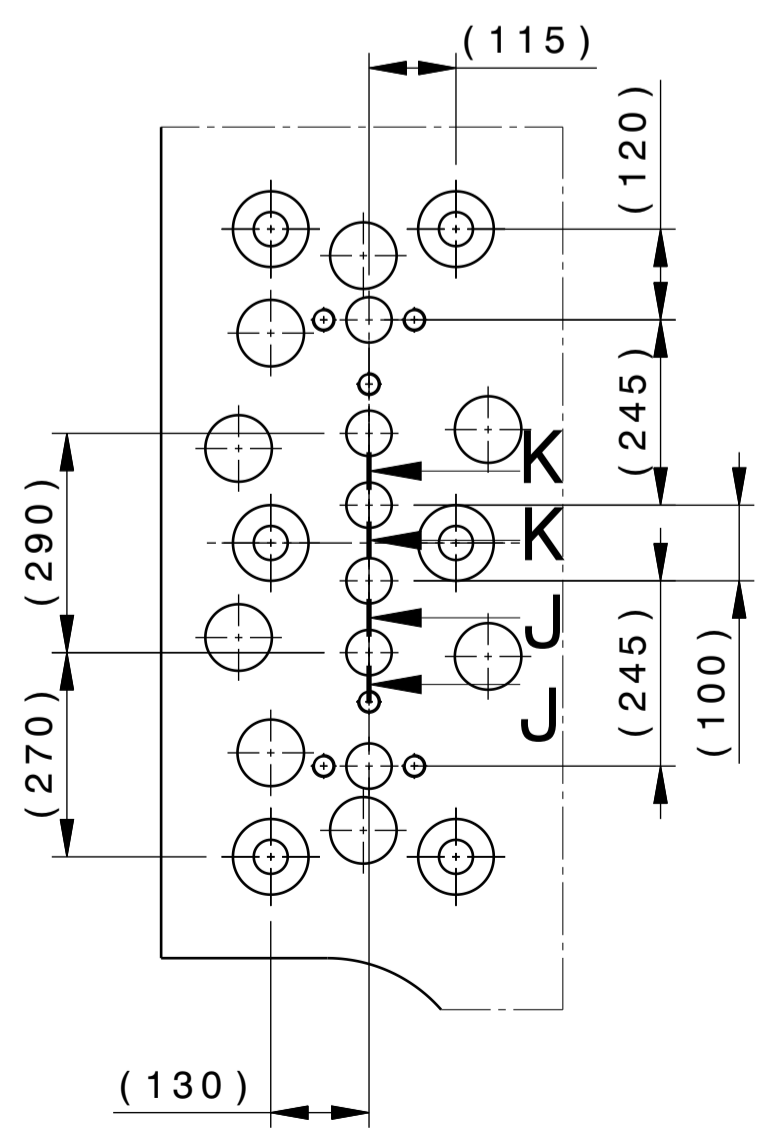
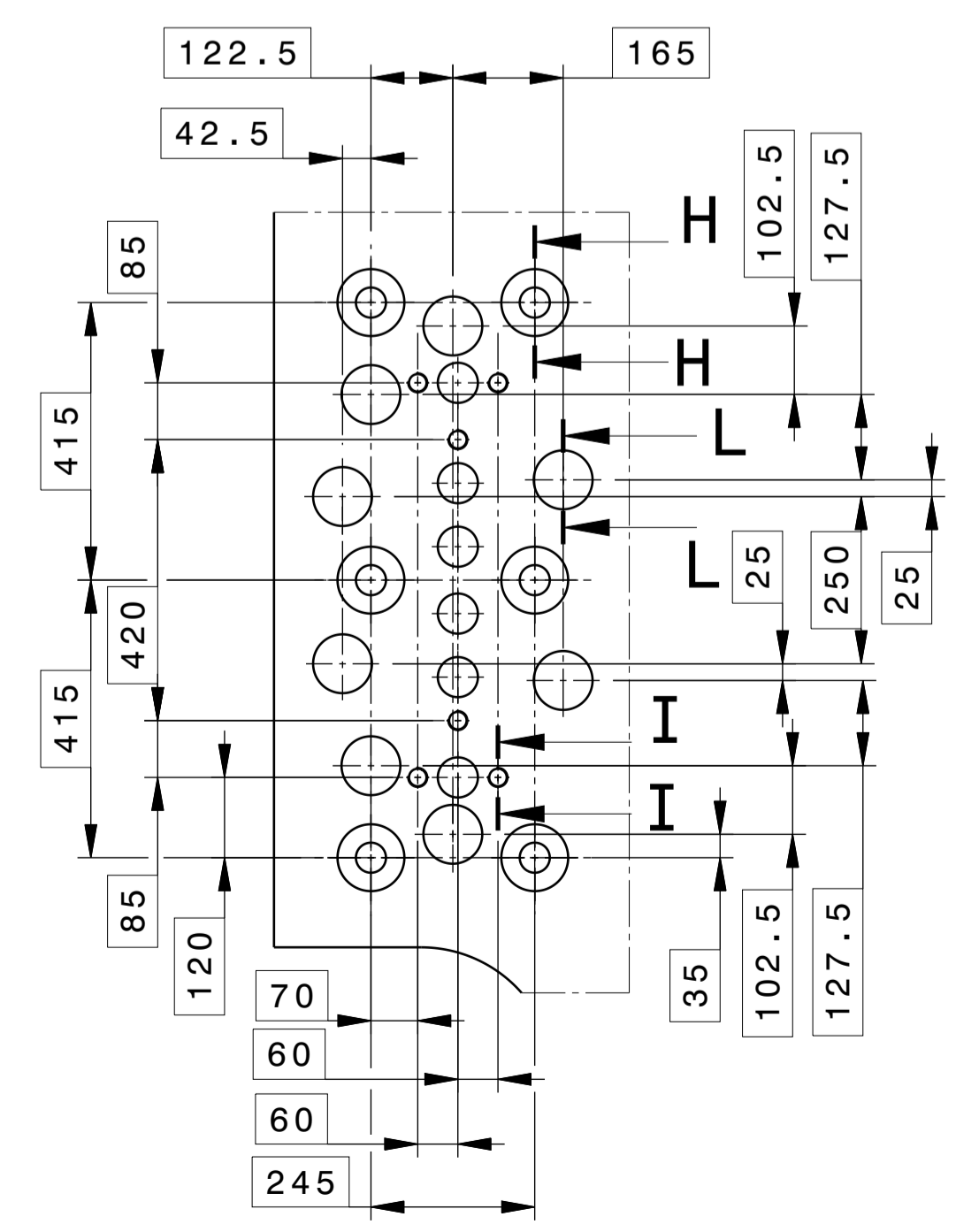


**DETAIL G**

Scale: 1:10  
APPLICABLE 2 TIMES

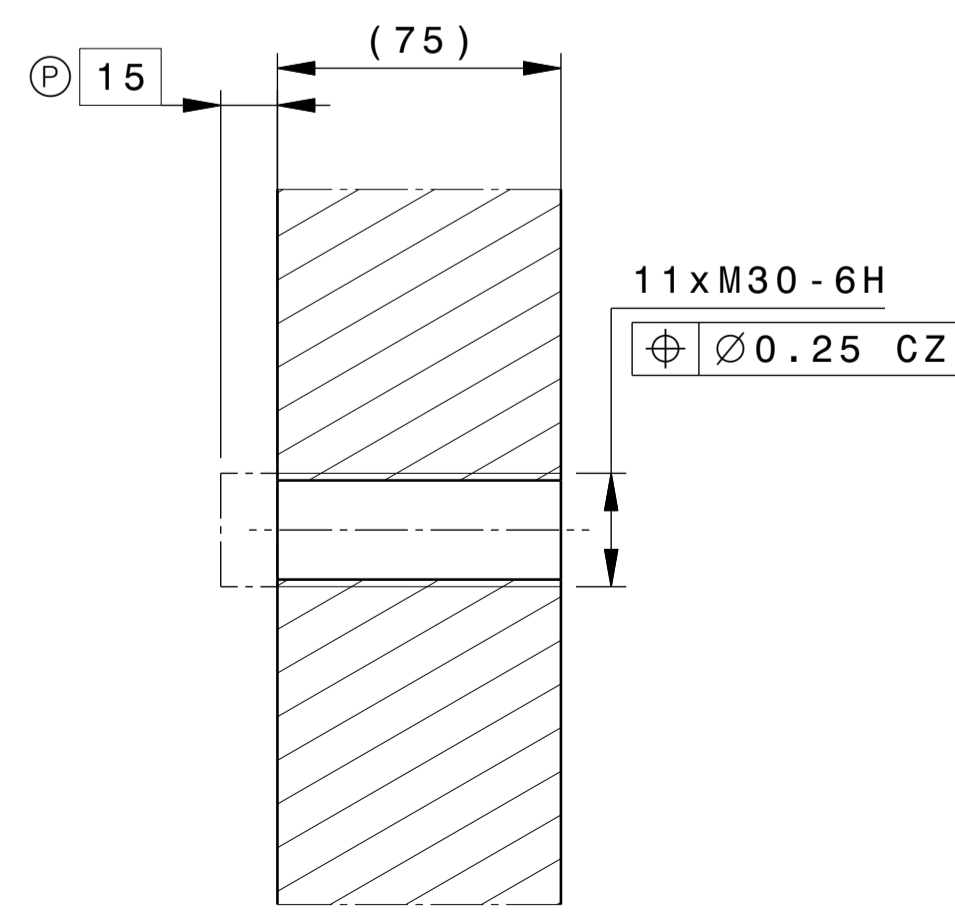
**DETAIL G**

Scale: 1:10  
APPLICABLE 2 TIMES



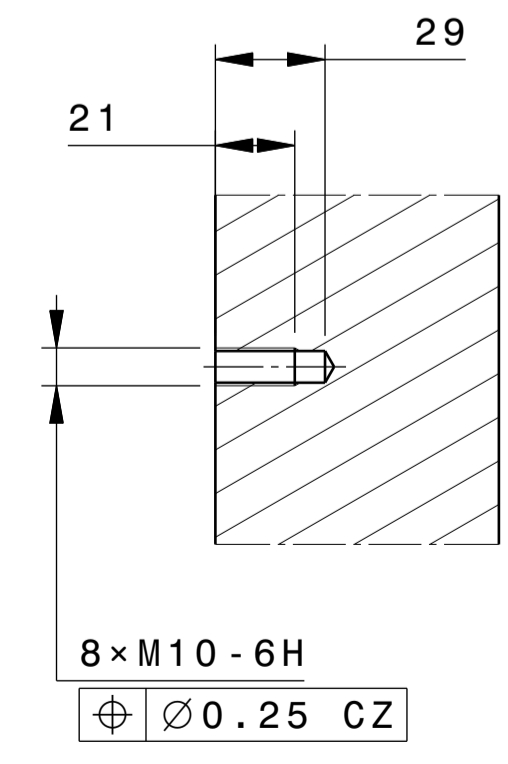
**SECTION VIEW M-M**

APPLICABLE 11 TIMES

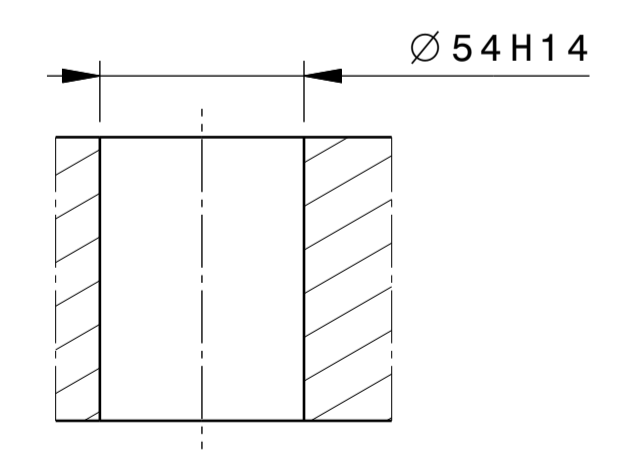


**SECTION VIEW N-N**

APPLICABLE 8 TIMES



**SECTION VIEW O-O**



DRW CAD ID	68H9FZ	APPROVED BY	ITER Organization	LEGAL OWNER	
LINED RVS PT ID	4U24XY	TECHNICAL REF	INTERNAL USE		
LINED 3D ID	6FQ3VK	ELOUAZA	When received pursuant to a contract or agreement, the confidentiality clause therein shall be applicable. When received during tender phase treat as confidential.		
DRS TITLE	Neutral Beam H&OD System	DRS BY	ITER Organization		
DATE OF ISSUE	05 Sep 23	PT MAJORITY	DD	PT VERSION	--B
DR STATUS	W	SCALE	1:2	DOCUMENT TYPE	Part Drawing
THIRD ANGLE PROJECTION		FORMAT	PMS NUMBER	DRAWING NUMBER	SHEET
			A1 53 01 PM	06326903	03

Spacreservation for the banner