
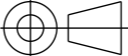
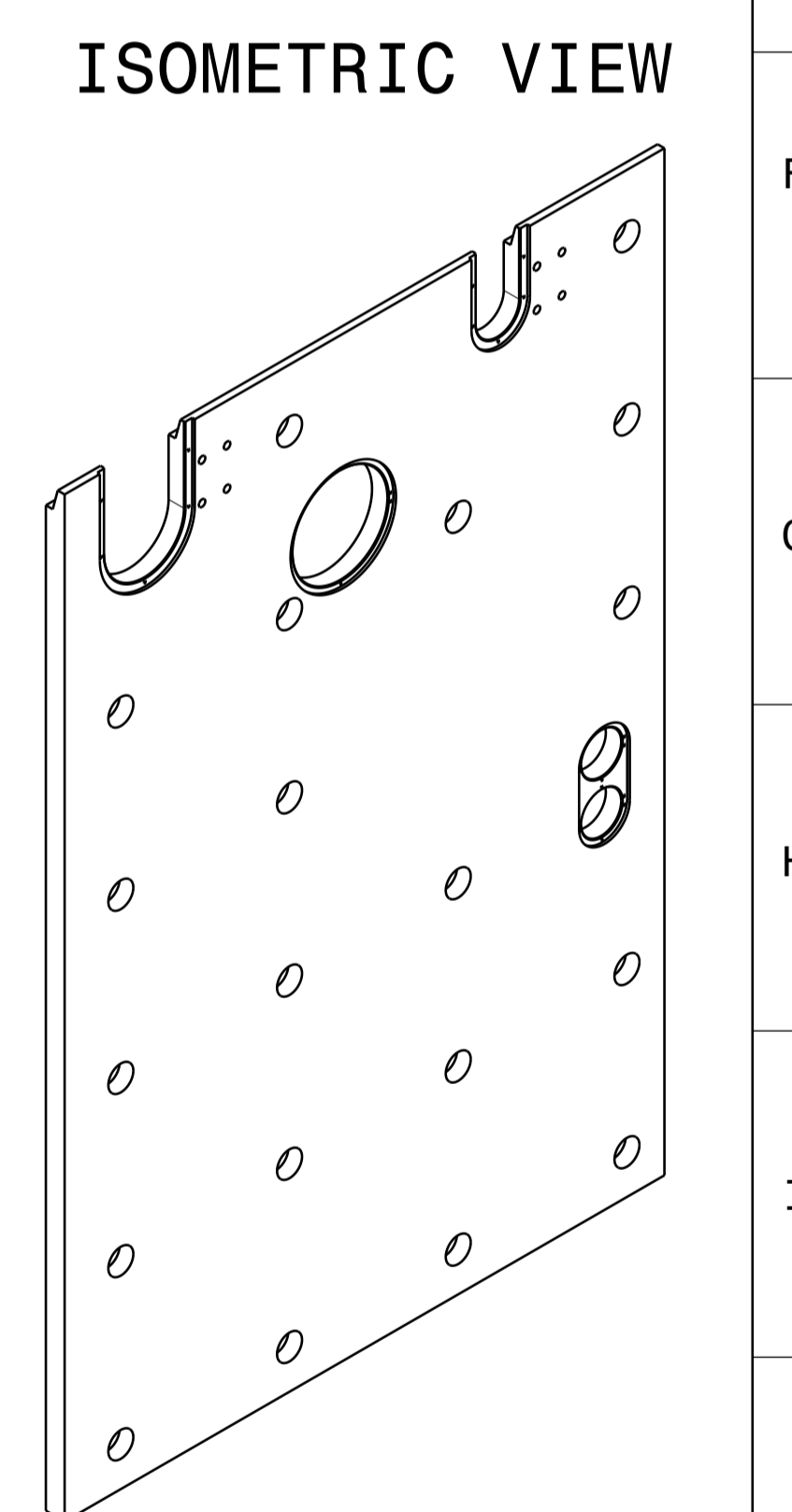
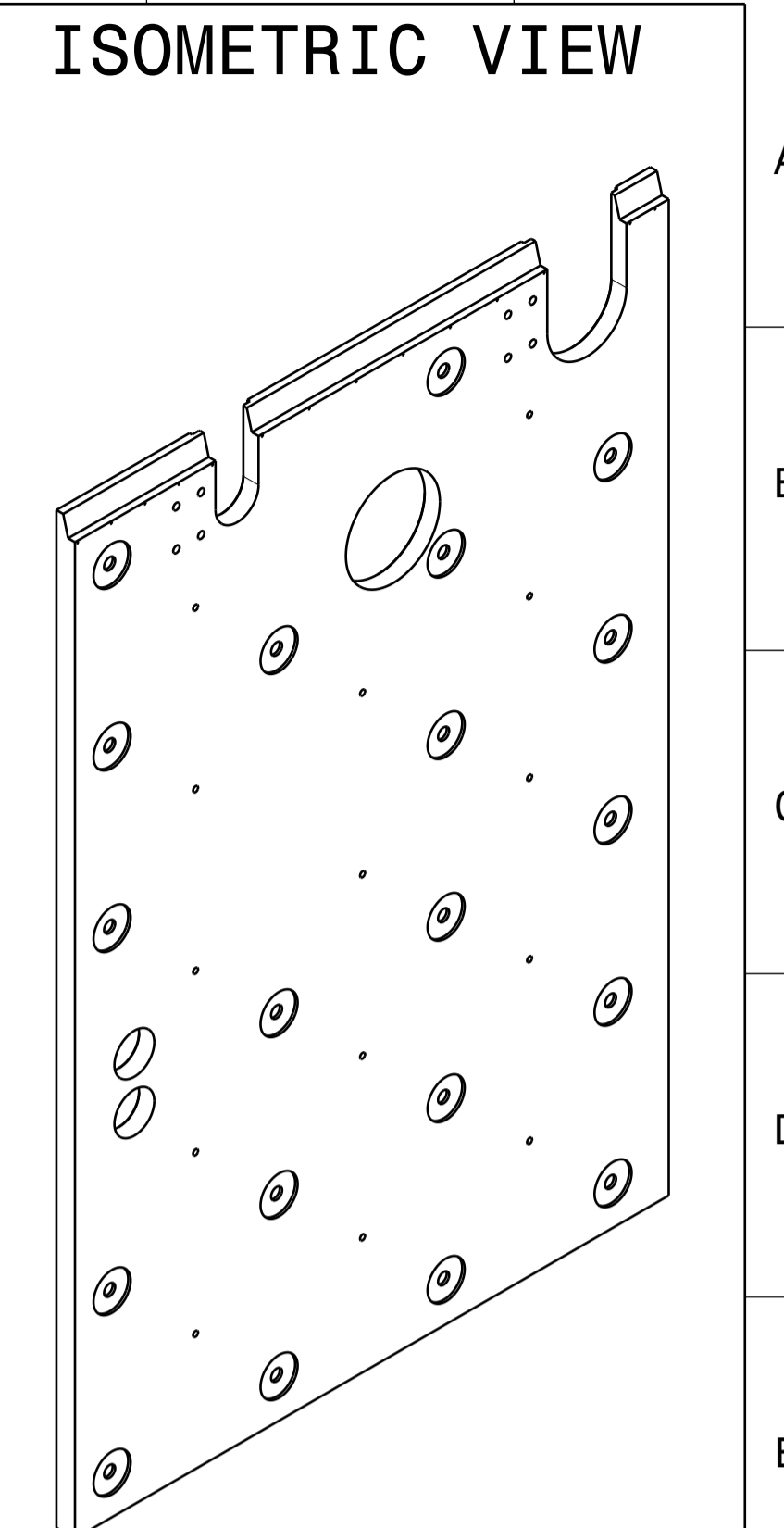
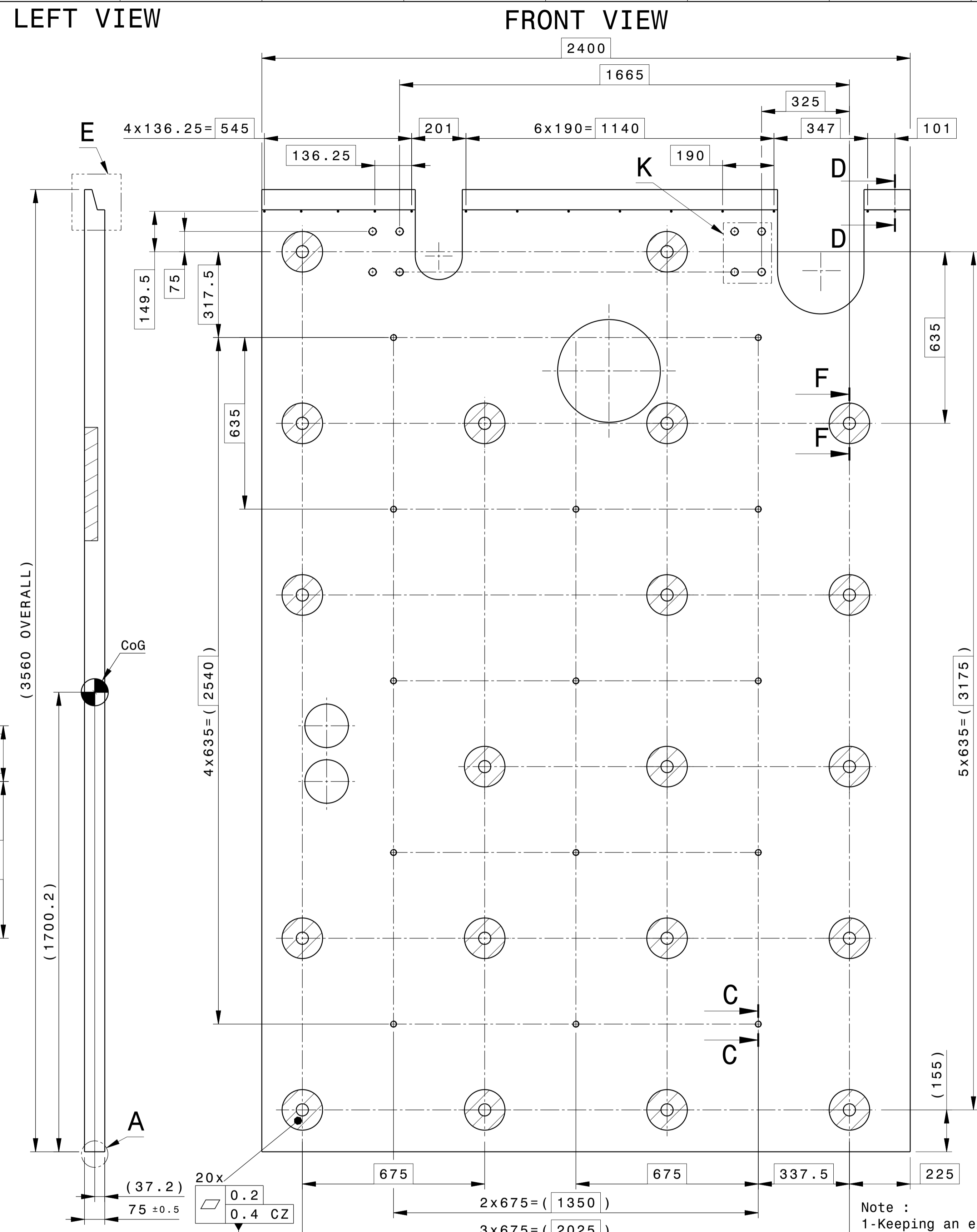
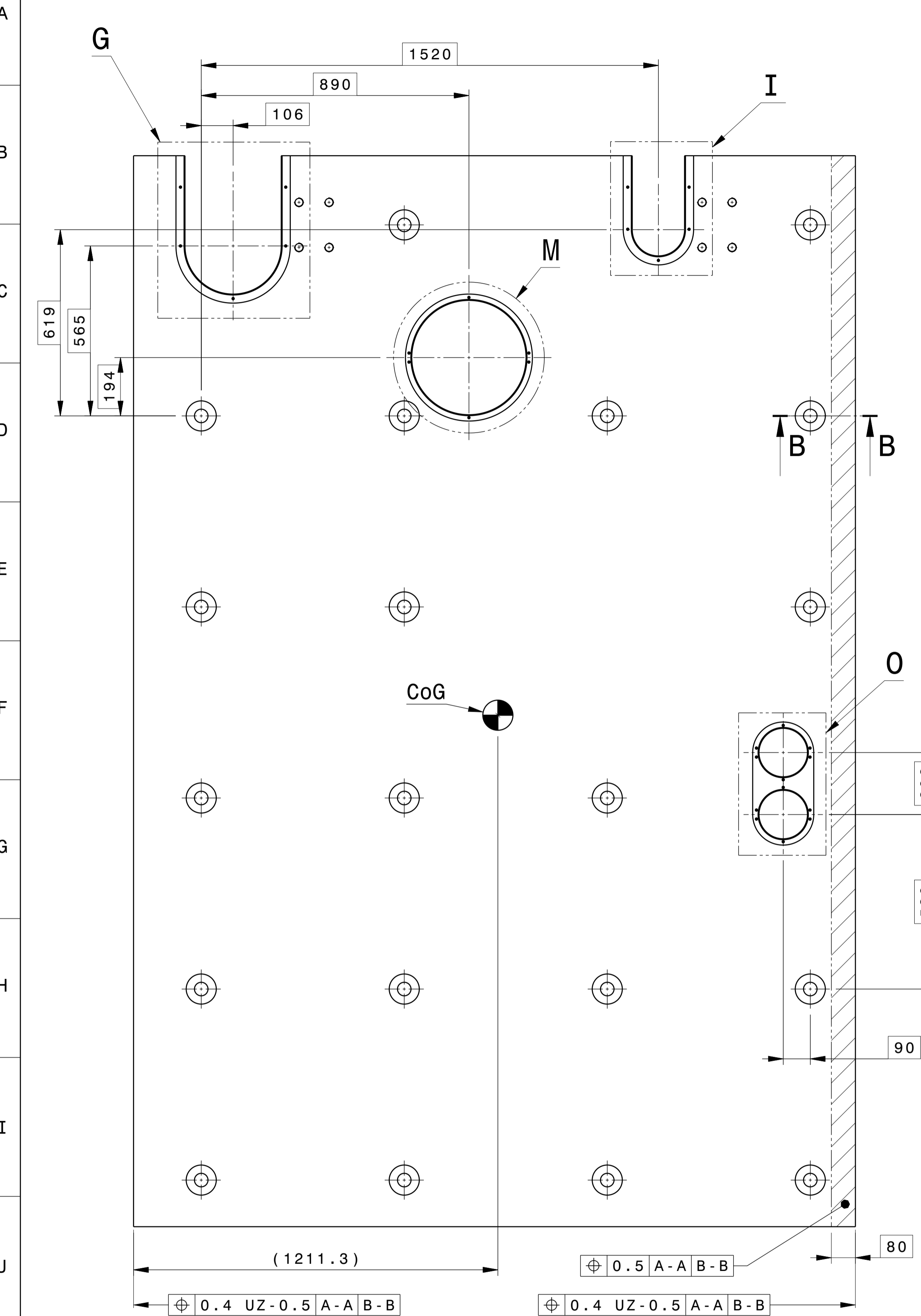


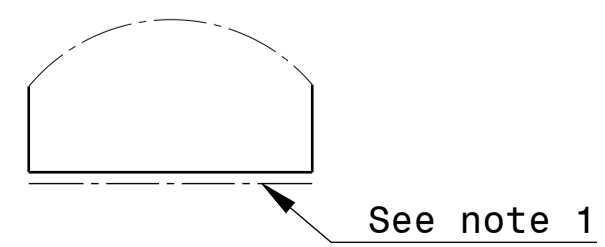
	1	2	3	4	5	6	7	8					
A													
B													
C													
D													
E					--A	UPDATE ACCORDING TO WP --B		30 Apr 24					
					---	FIRST EDITION		17 Mar 22					
F					REV No.	DETAILS OF MODIFICATION	SHEET No.	GRID REF	DATE	DCR No.			
					DRW CAD ID	4D8DXF	APPROVED BY	ITER Organization		LEGAL OWNER			
					LINKED EV5 PT ID	4U252N	VELTRIP	INTERNAL USE		 <small>china EU india japan korea russia USA</small>			
					LINKED 3D ID	6FQ4MF	ELOUAZA	When received pursuant to a contract or agreement, the confidentiality clause therein shall be applicable. When received during tender phase treat as confidential.					
					PBS TITLE	Neutral Beam H&CD System HNB01 injector Passive magnetic shield	IRAZOQN	DRAWING TITLE					
					DATE OF ISSUE	30 Apr 24	PT MATURITY	DD	PT VERSION	--B	SIDE_PMS_1L_INSIDE MODIFICATIONS_SHEET		
					DR STATUS	W	SCALE	1:1	PT STATUS	W			
					THIRD ANGLE PROJECTION			QUALITY CLASS	SR	DOCUMENT TYPE	Part Drawing		
					FORMAT	A3	PBS NUMBER	53 01 PM	DRAWING NUMBER	06255301	SHEET	N°OF SHEETS	REVISION
										03			--A

Spacereservation for the banner

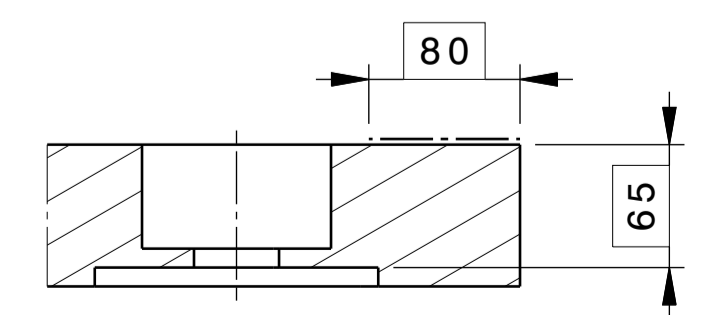
Spacereservation for the banner



DETAIL A
Scale: 1:2



SECTION VIEW B-B
Scale: 1:4



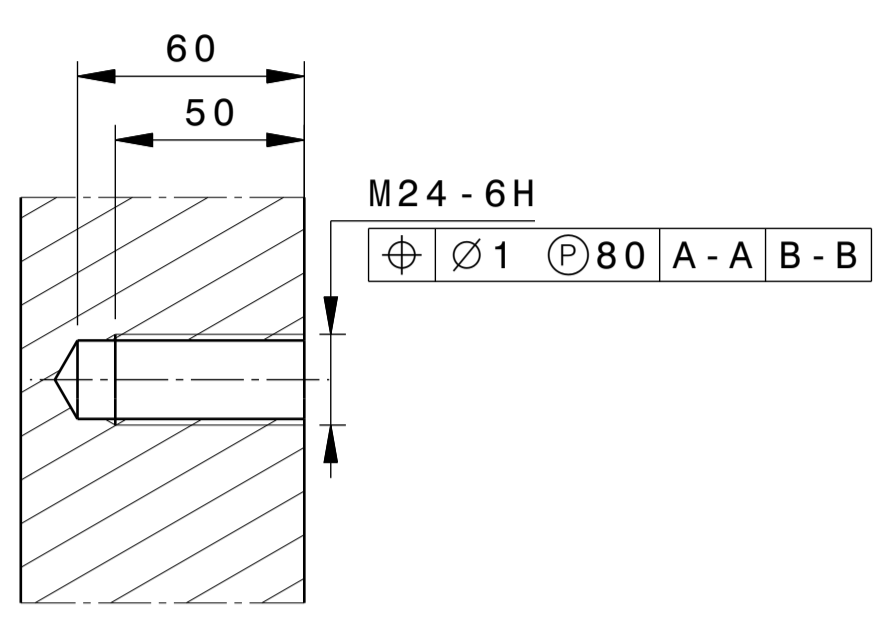
Note :

- 1-Keeping an extra length is required to custom machine during factory assembly see to the drawing SIDE_PMS_1L_ASSEMBLY.
- 2-All dimensions could be controlled under constraints. Tooling could be used to achieve the constraint.
- 3-For theoretical dimension see the whole PMS_ASSEMBLY DRW.

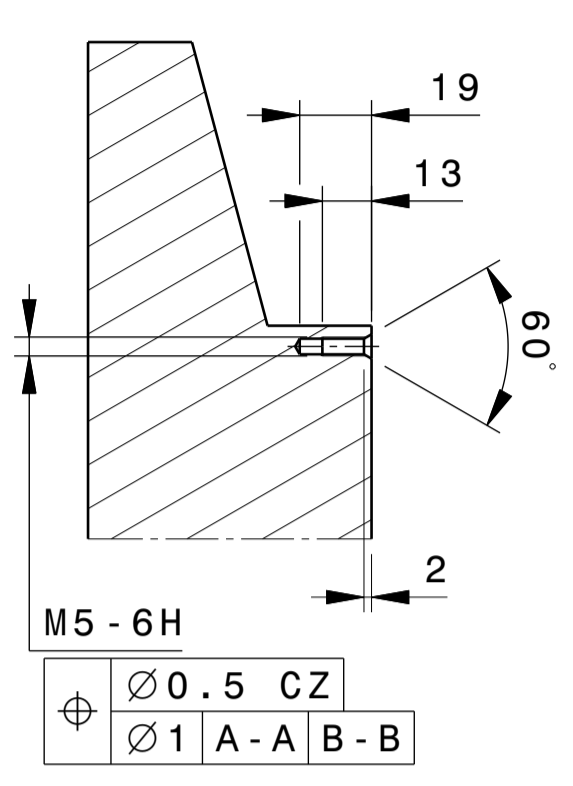
Attribute	Value	Remarks
Material	S235 Pure Iron	
Mass	4569kg	
General tolerances, unless otherwise stated	ISO 22081:2021 t1 A-A B-B General geometric tolerance to be applied also to linear and angular sizes	Tolerancing follow ISO 8015
Specific requirements	Break sharp edges	
Marking		
Size of the feature	≤100	100<S<500
t1	0.2	0.5
		0.8
		1
		2
		3

DRW CAD ID	4D8DXF	APPROVED BY	ITER Organization	LOCAL OWNER
LINED RVS PT ID	4U252N	TECHNICAL REF	VELTRIP	INTERNAL USE
LINED 3D ID	6FQ4MF	ELOUAZA		
DRW TITLE	Neutral Beam H&OD System HN801 injector Passive magnetic shield	DRW BY	IRA20QN	SAFETY CLASS
DATE OF ISSUE	30 Apr 24	PT STATUS	DD	SR
SCALE	1:10	PT VERSION	--B	QC-2
THIRD ANGLE PROJECTION		DOCUMENT TYPE	Part Drawing	
FORMAT	A1	DRAWING NUMBER	53 01 PM	SHEET
			062553	02 03
				REVISION
				--A

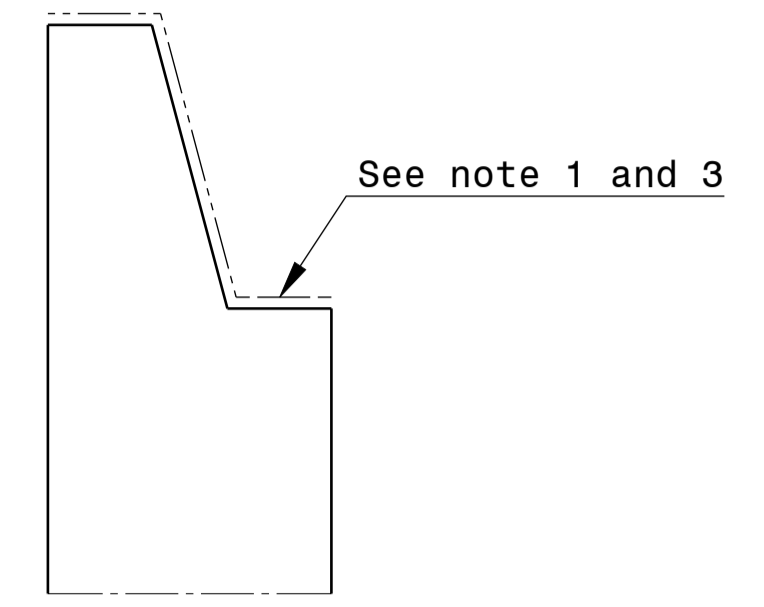
SECTION VIEW C-C
Scale: 1:2
APPLICABLE 14 TIMES



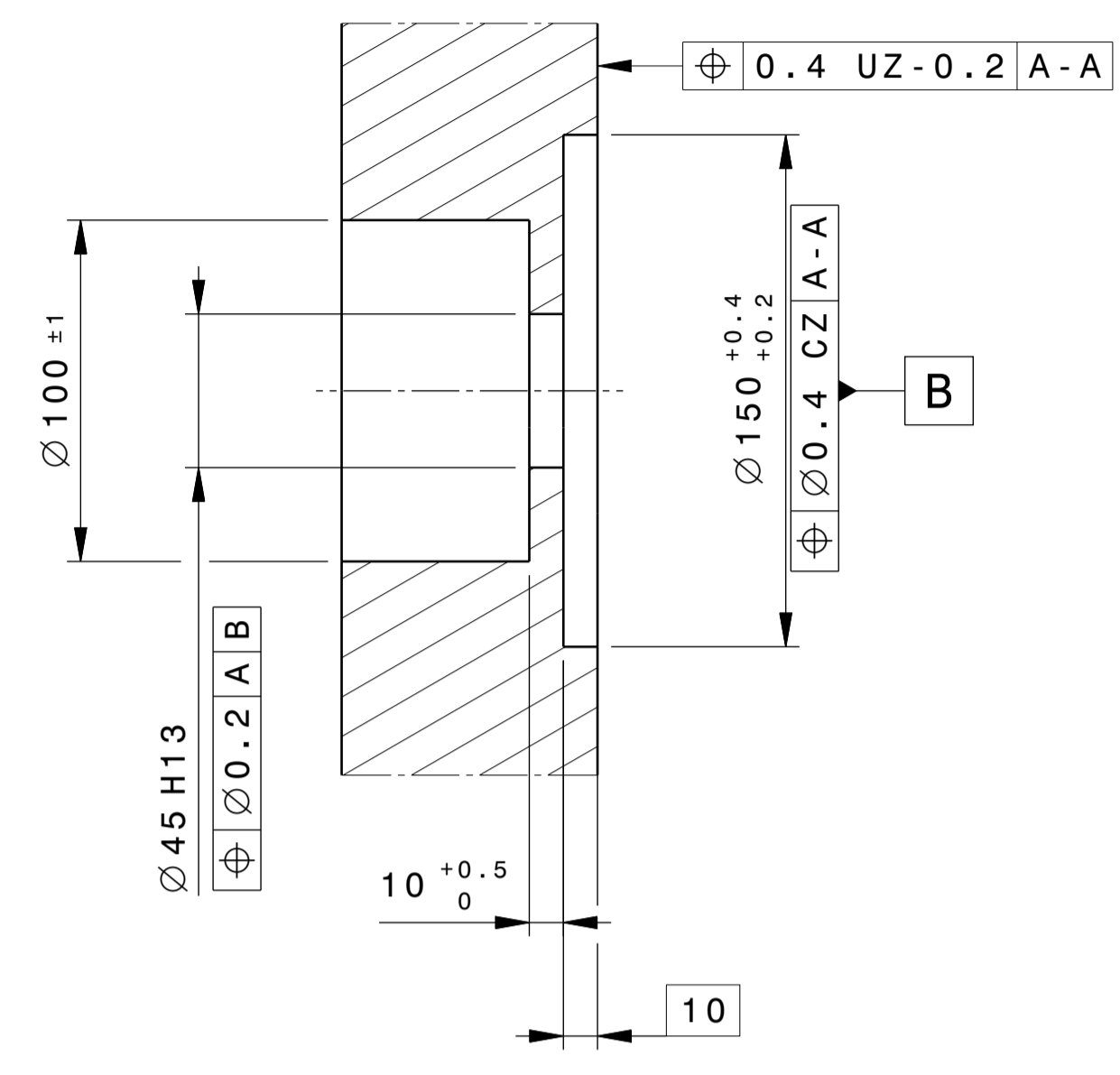
SECTION VIEW D-D
Scale: 1:2
APPLICABLE 14 TIMES



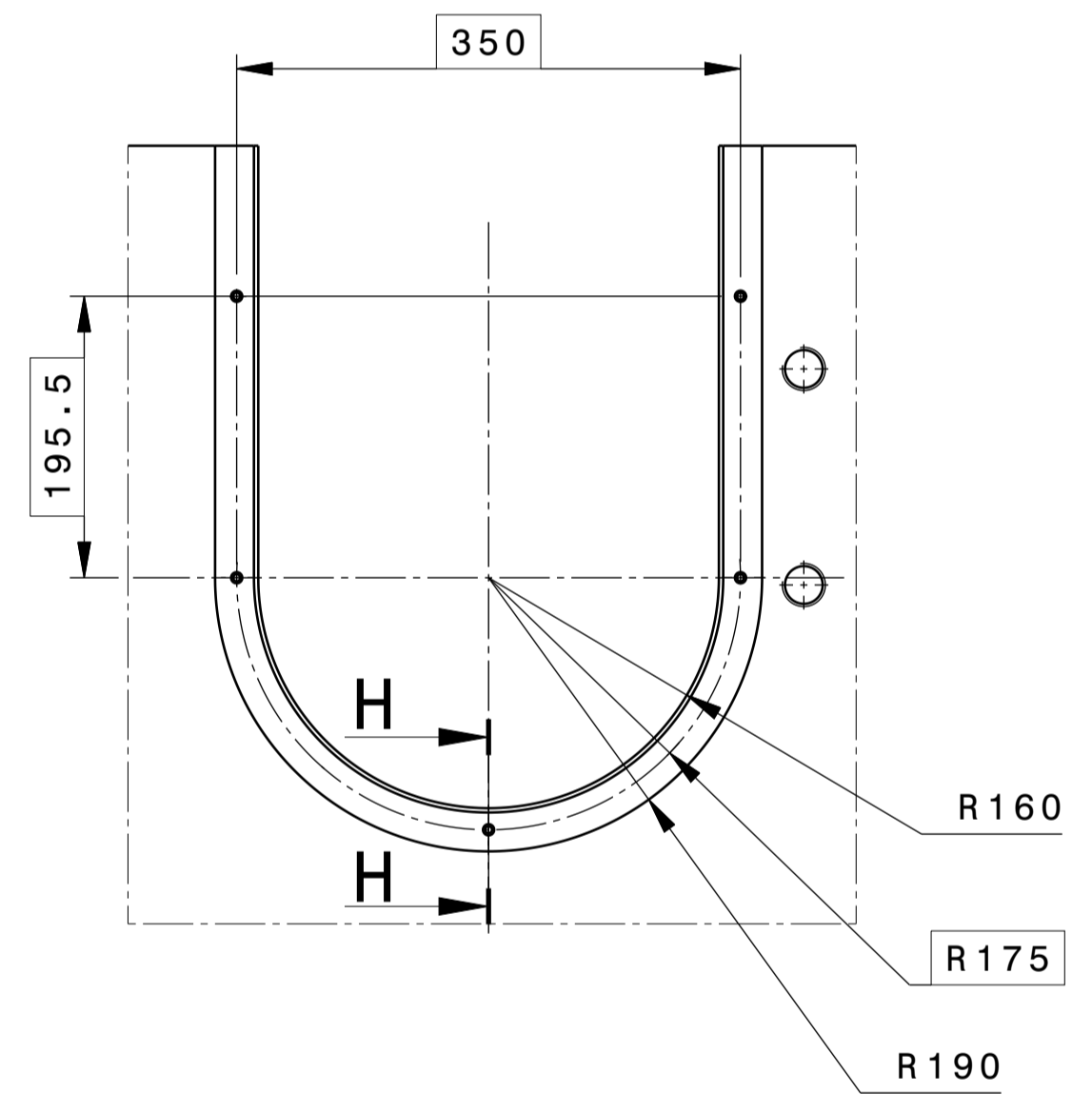
DETAIL E
Scale: 1:2



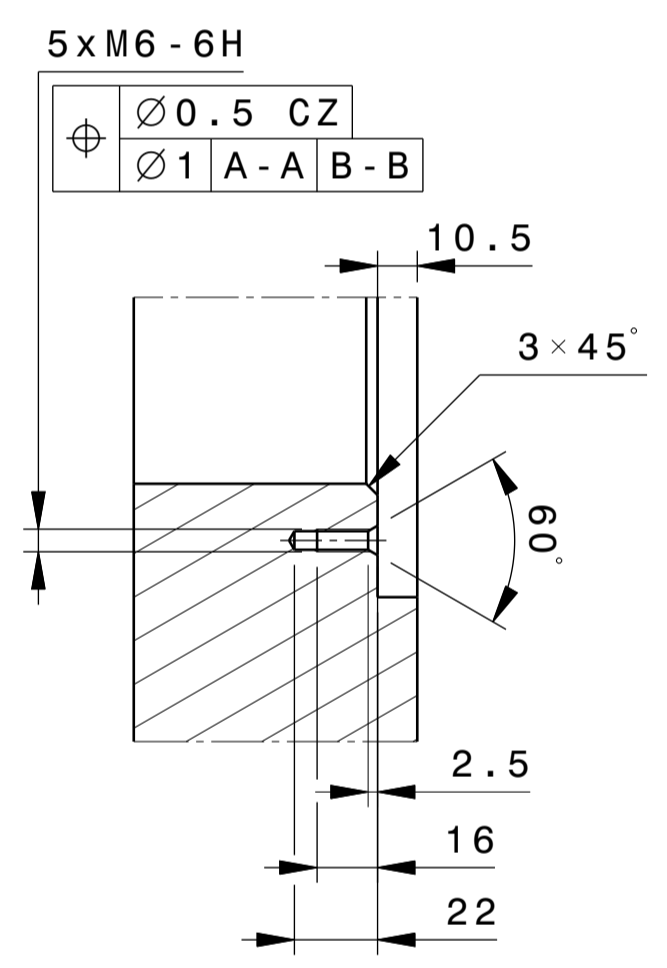
SECTION VIEW F-F
Scale: 1:2
APPLICABLE 20 TIMES



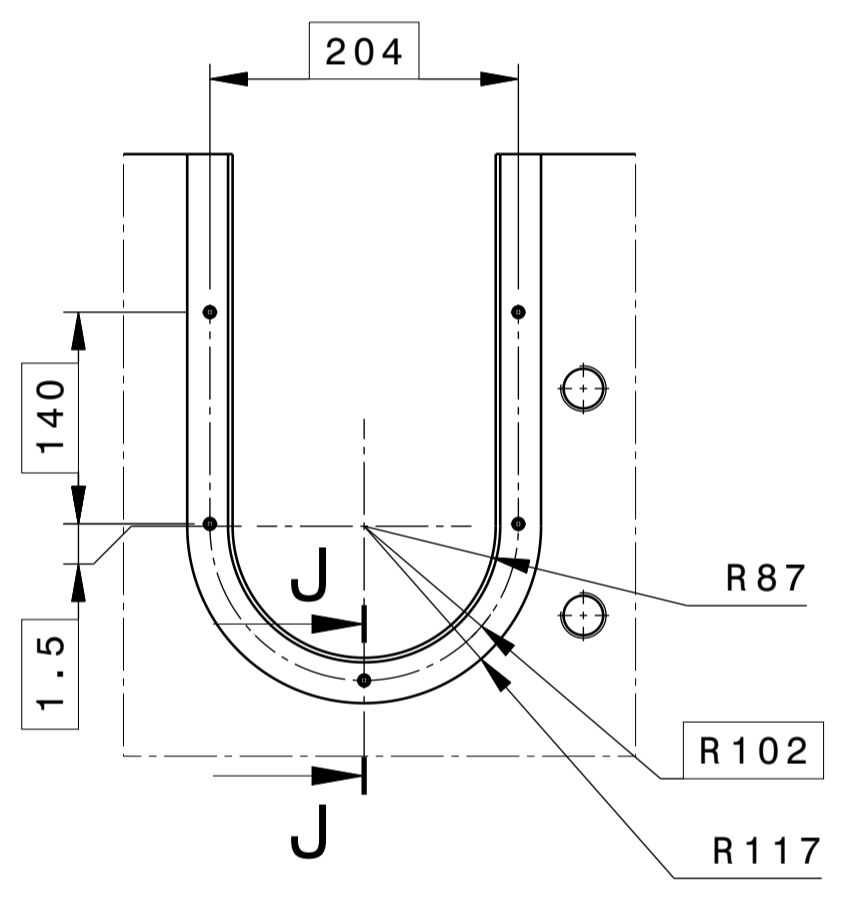
DETAIL G



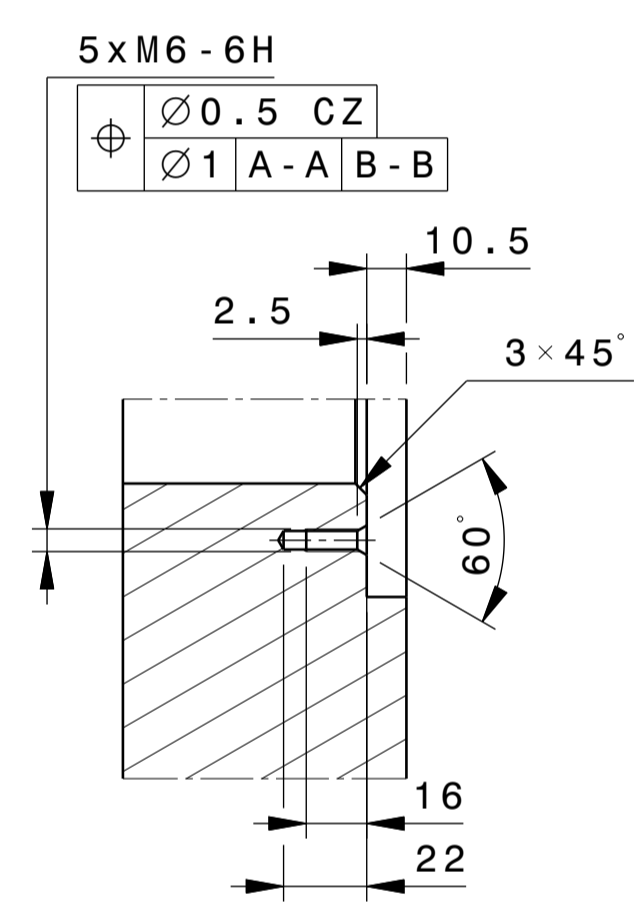
SECTION VIEW H-H
Scale: 1:2



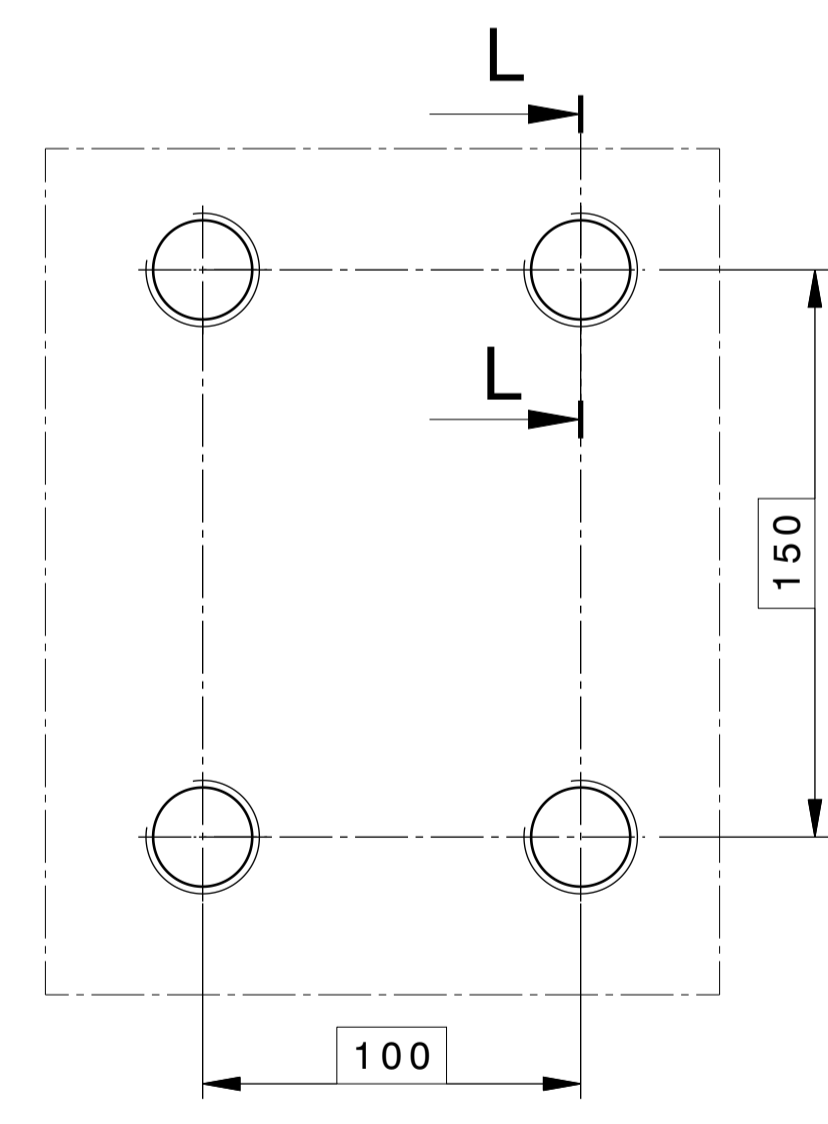
DETAIL I



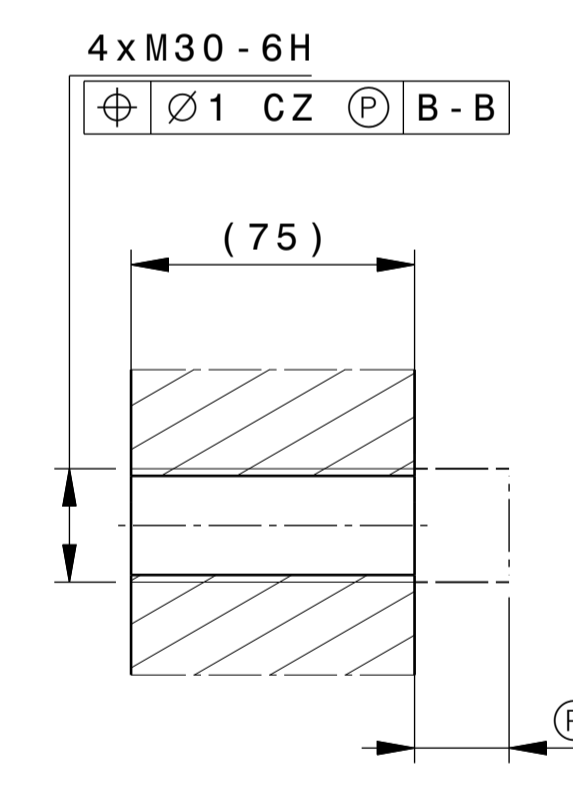
SECTION VIEW J-J
Scale: 1:2



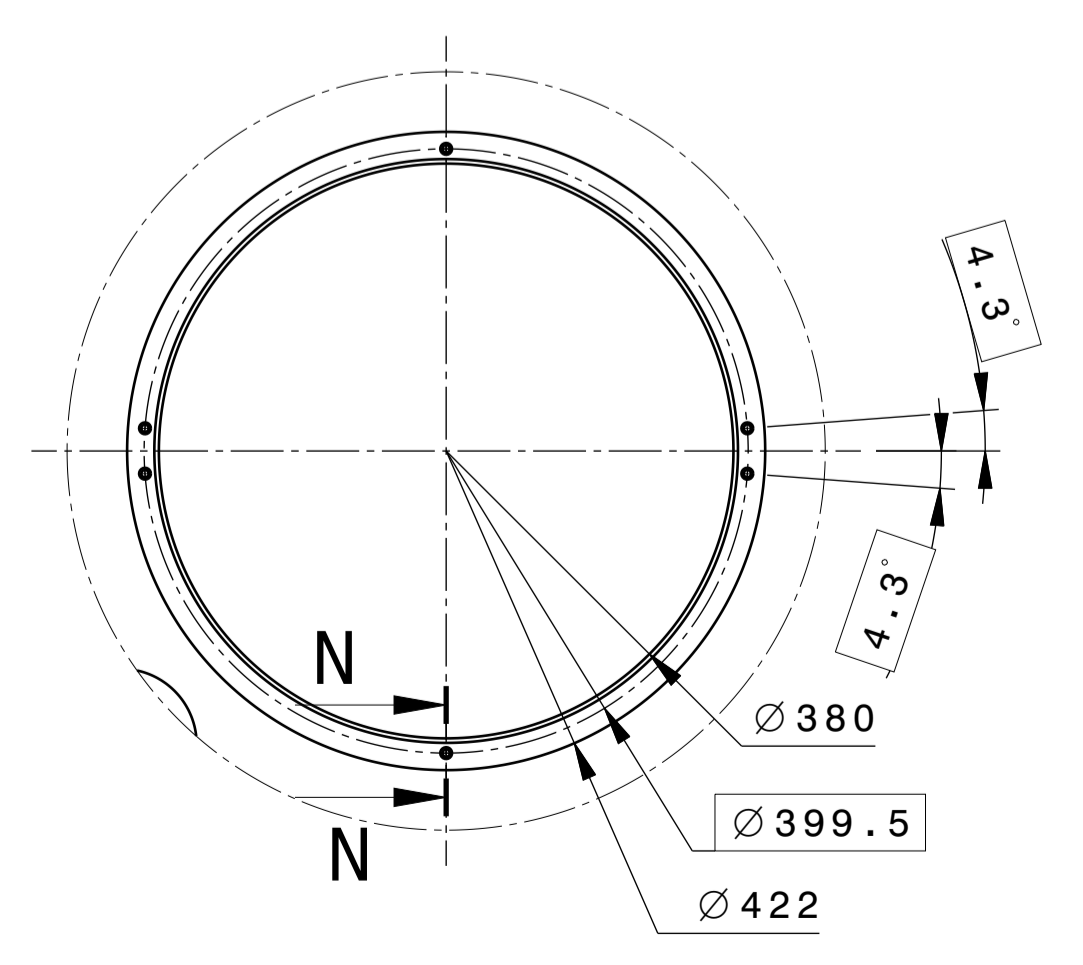
DETAIL K
Scale: 1:2
APPLICABLE 2 TIMES



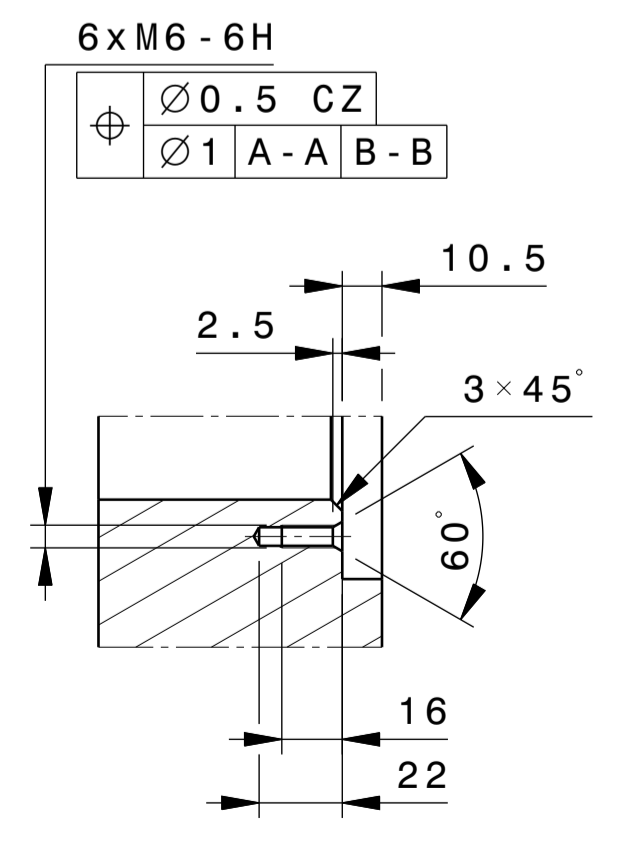
SECTION VIEW L-L
Scale: 1:2



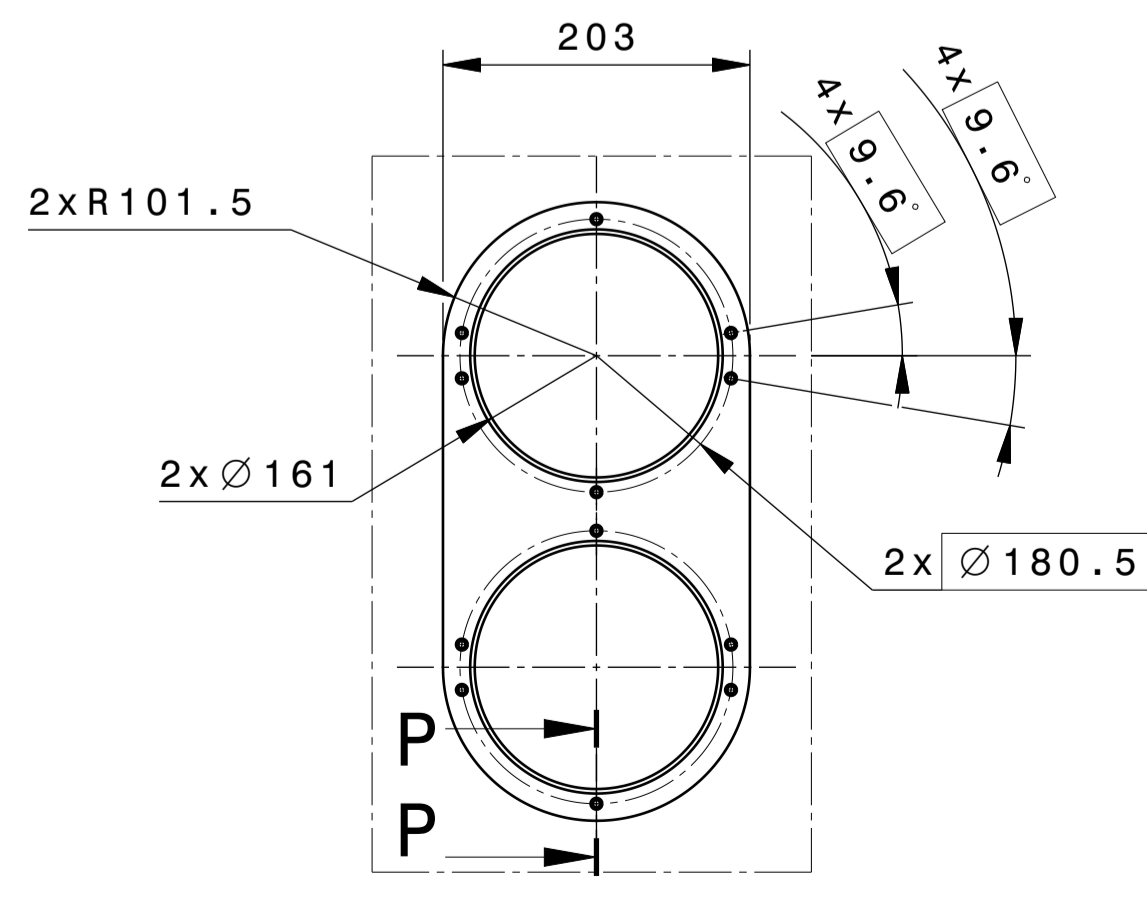
DETAIL M



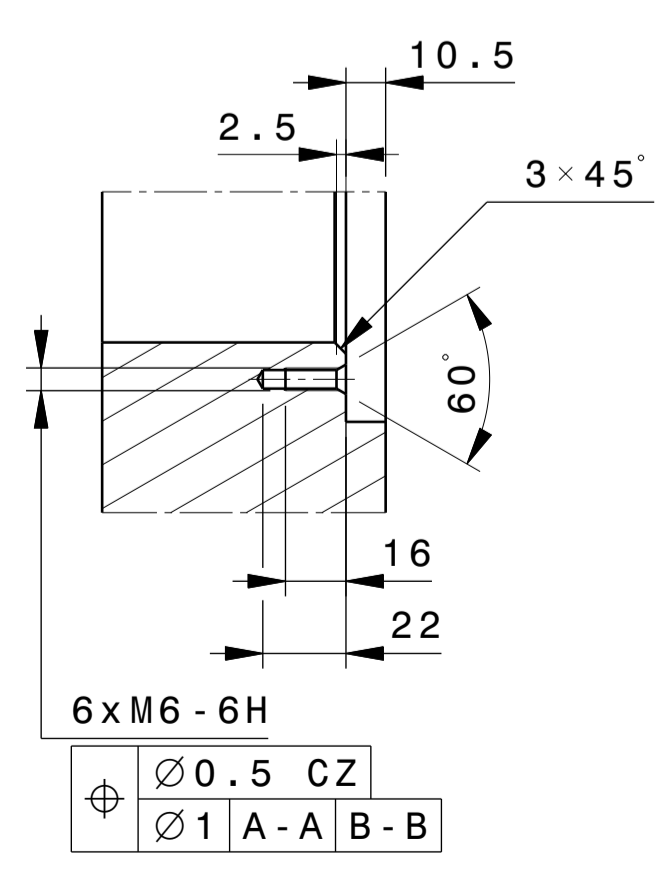
SECTION VIEW N-N
Scale: 1:2



DETAIL O



SECTION VIEW P-P
Scale: 1:2
APPLICABLE 6 TIMES



DRW CAD ID	4D8DXF	APPROVED BY	ITER Organization	LEGAL OWNER	
LINED RVS PT ID	4U252N	VELTRIP	INTERNAL USE		
LINED 3D ID	6FQ4MF	TECHNICAL REF	When received pursuant to a contract or agreement, the confidentiality clause therein shall be applicable. When received during tender phase treat as confidential.		
DRS TITLE	Neutral Beam H&OD System HN801 injector Passive magnetic shield	ELOUAZA			
DATE OF ISSUE	30 Apr 24	DD	SR	SAFETY CLASS	
DR STATUS	W	SCALE	1:5	QC-2	
THIRD ANGLE PROJECTION		FORMAT	W	QUALITY CLASS	
		FIG NUMBER	A1 53 01 PM	DOCUMENT TYPE	Part Drawing
		DRAWING NUMBER	062553	SHEET	03
		N° OF SHEETS	03	REVISION	--A