
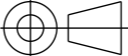


	1	2	3	4	5	6	7	8					
A													
B													
C													
D													
E					--A	UPDATED ACCORDING TO WP --B		06 Jul 23					
					---	FIRST EDITION		04 Apr 22					
F					REV No.	DETAILS OF MODIFICATION	SHEET No.	GRID REF	DATE	DCR No.			
					DRW CAD ID	4K7MVT	APPROVED BY	ITER Organization		LEGAL OWNER			
					LINKED EV5 PT ID	4U2555	ROTTIC	INTERNAL USE		 <small>china EU india japan korea russia USA</small>			
					LINKED 3D ID	4U25VR	TECHNICAL REF	When received pursuant to a contract or agreement, the confidentiality clause therein shall be applicable.					
					PBS TITLE	Neutral Beam H&CD System HNB01 injector Passive magnetic shield	ELOUAZA	When received during tender phase treat as confidential.					
					DATE OF ISSUE	06 Jul 23	PT MATURITY	DD	PT VERSION	--B			
					DR STATUS	W	SCALE	1:1	PT STATUS	W			
					THIRD ANGLE PROJECTION			FORMAT	PBS NUMBER	DRAWING NUMBER	SHEET	N°OF SHEETS	REVISION
								A3	53 01 PM	06266401	03	--A	

Spacereservation for the banner

Spacereservation for the banner

**FRONT VIEW**

(2462 OVERALL)

**SECTION VIEW A-A**

**DETAIL B**

Scale: 5:1

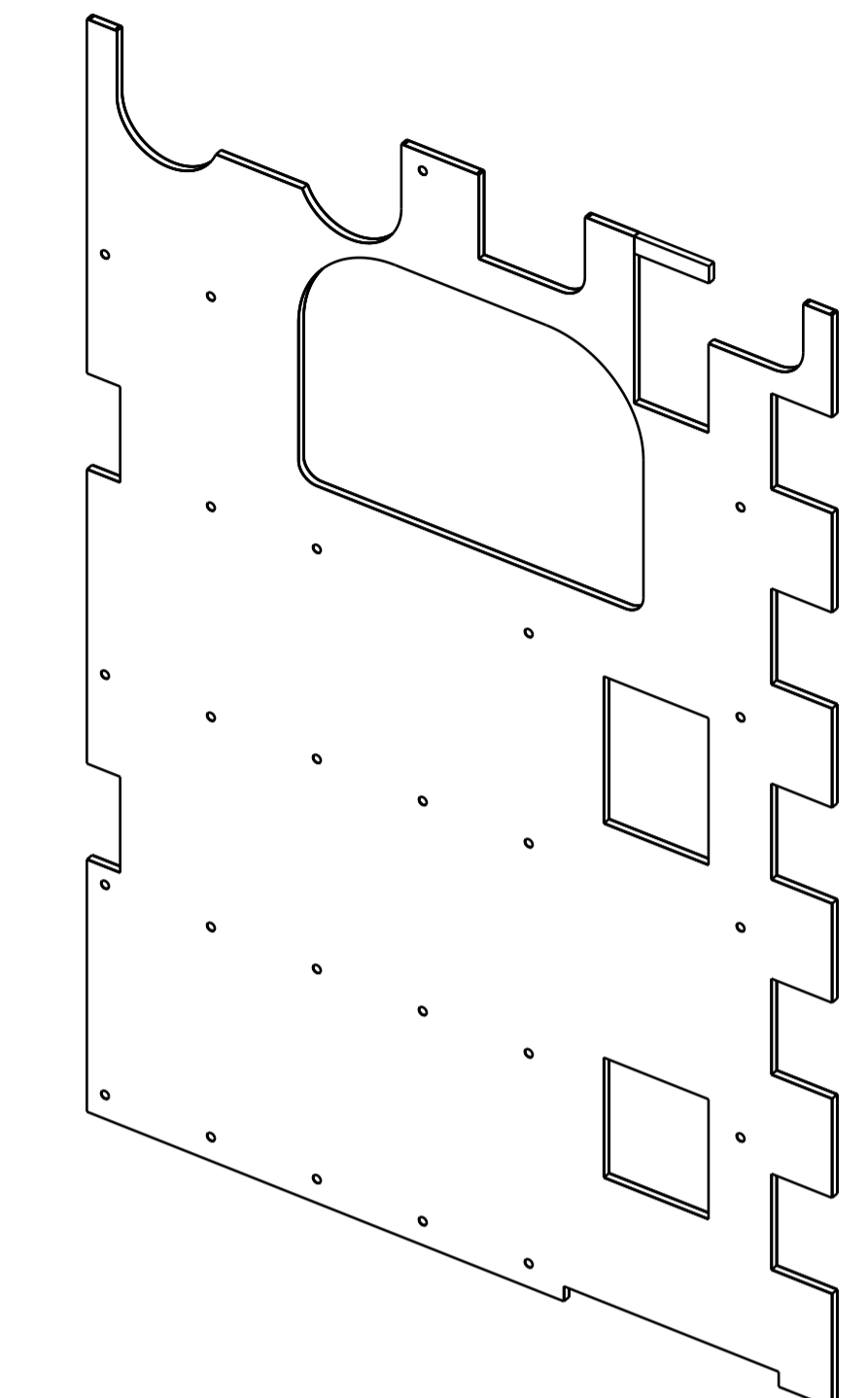
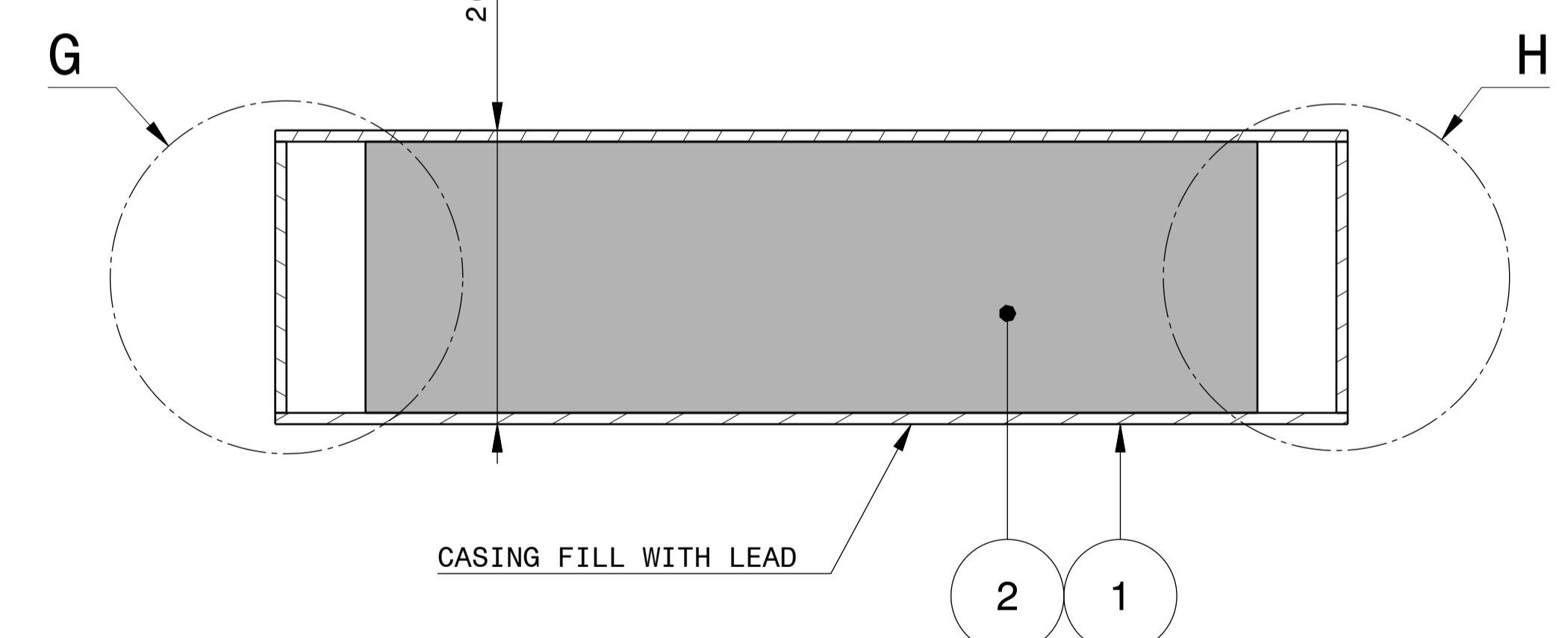
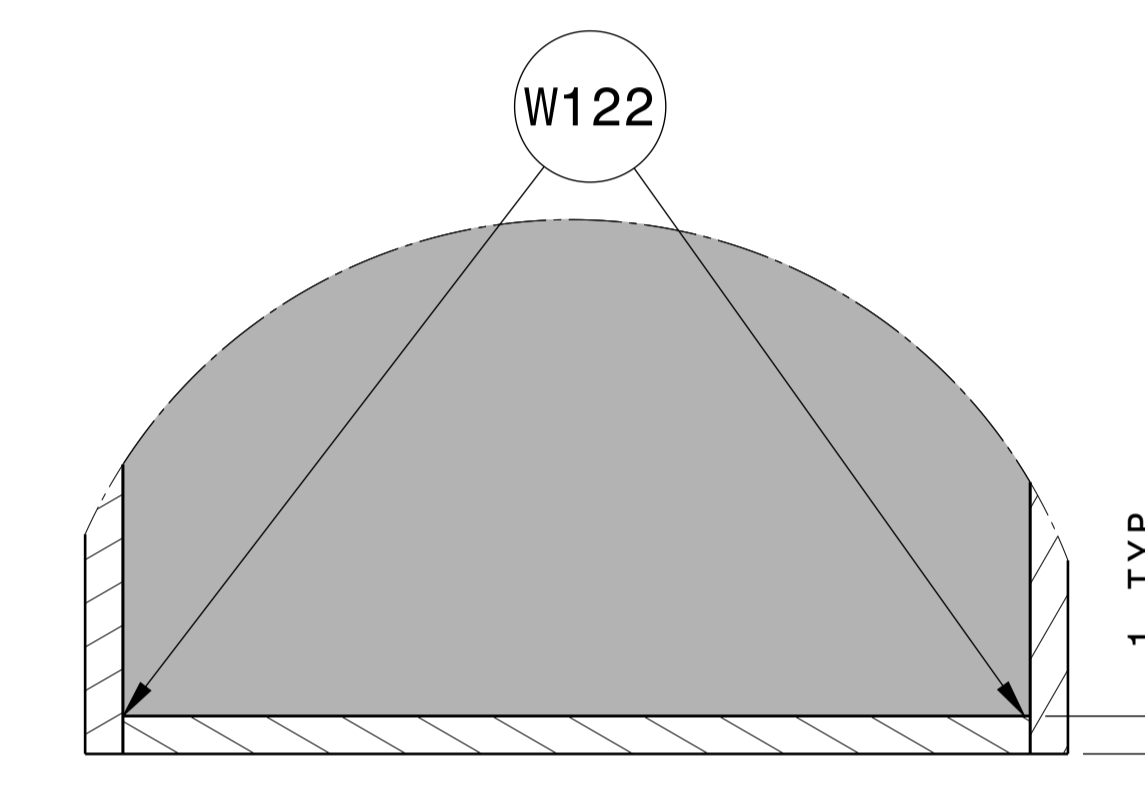
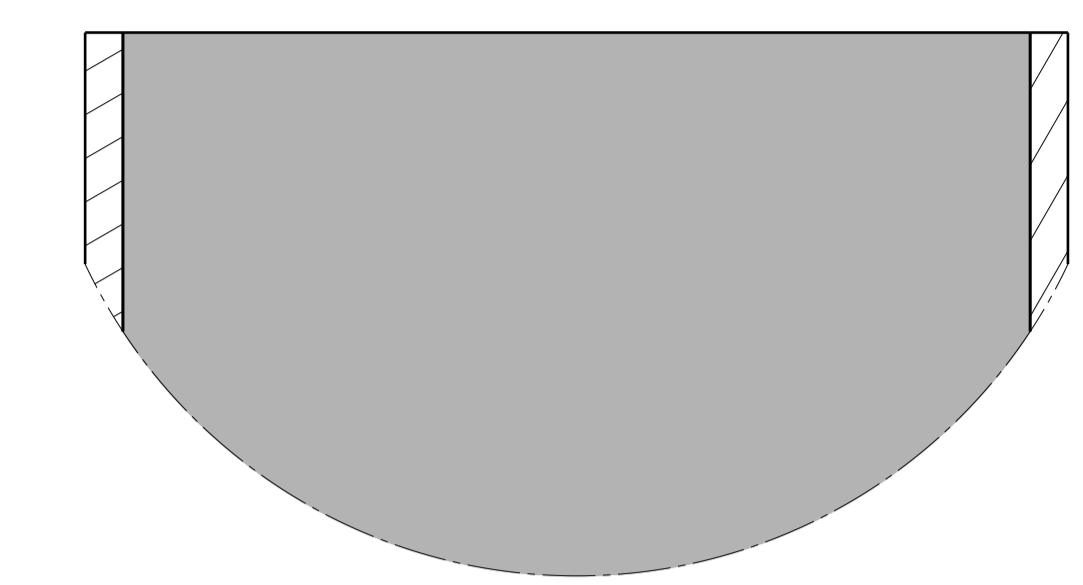
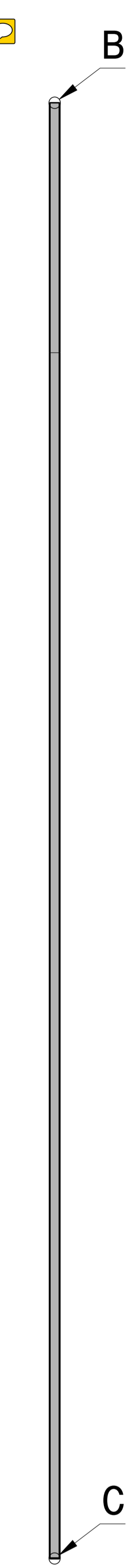
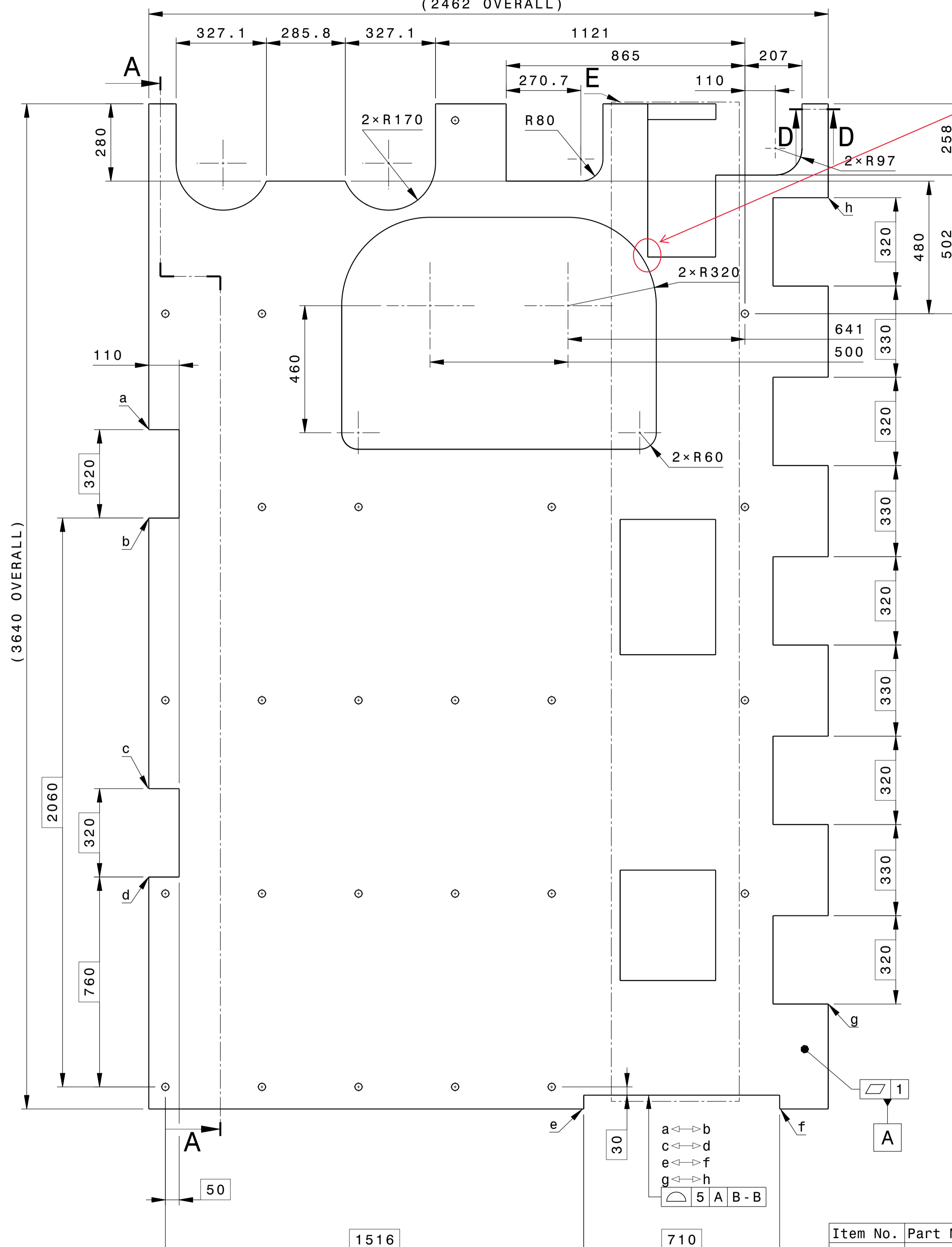
**ISOMETRIC VIEW**

**DETAIL C**

Scale: 5:1

**SECTION VIEW D-D**

Scale: 2:1

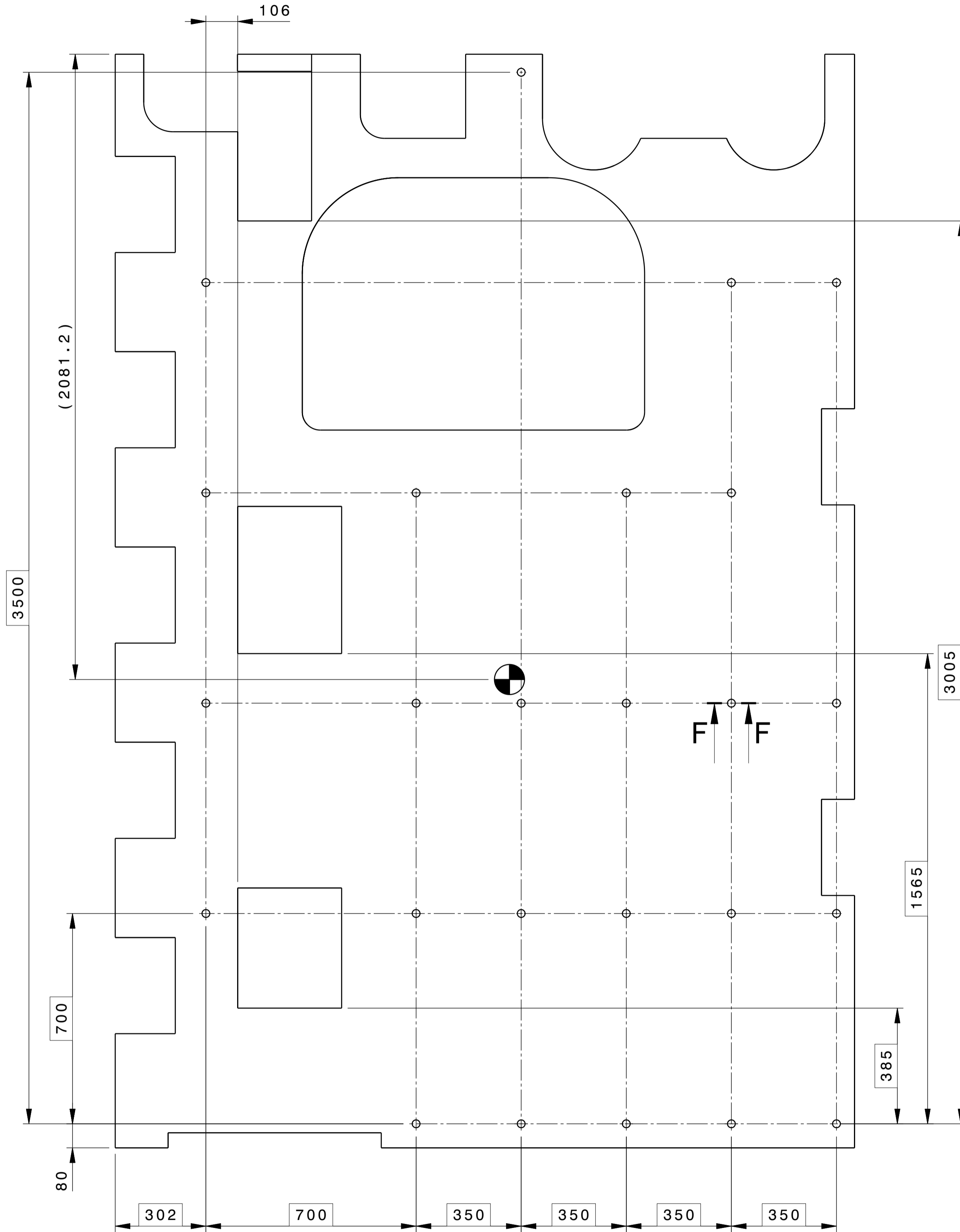


Item No.	Part Number	Revision	Material	Quantity	Weight
1	SIDE_PMS_4L_CASING#5SSWB9	---	304L	1	120kg
2	SIDE_PMS_4L_LEAD_PLATE#Q5E9K2	--D	Lead	1	1759kg
Attribute	Value	Remarks			
Material	See BOM				
Mass	See BOM				
General tolerances, unless otherwise stated	ISO 22081:2021 3 A B-B	Tolerancing follow ISO 8015			
Specific requirements	Break sharp edges				
Marking					

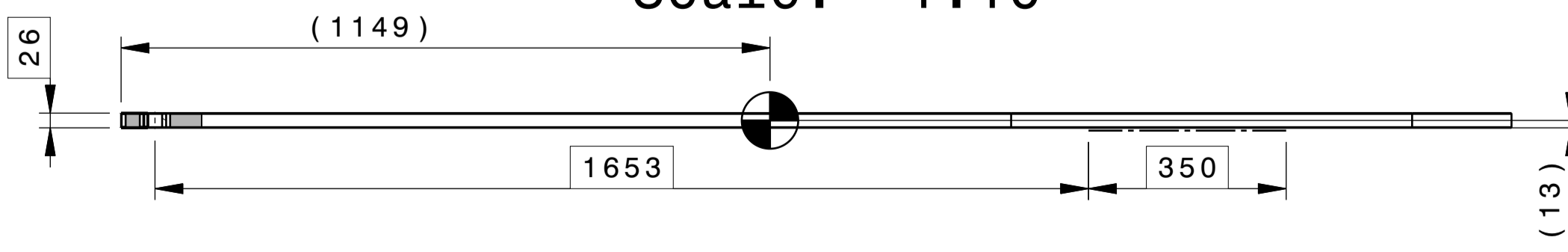
Note :  
 1-Item ② is Cast lead in casing item ①.  
 2-The welding details are given in the welding table ITER\_D\_7HMEAR.  
 3-All dimensions could be controlled under constraints. Tooling could be used to achieve the constraint.

DRW CAD ID	4K7MVT	APPROVED BY	ITER Organisation	LOCAL OWNER
LINED REV	PT ID	4U2555	ROTTIC	INTERNAL USE
LINED 3D ID	4U25VR	TECHNICAL REF	ELOUAZA	When received pursuant to a contract or agreement, the confidentiality clause therein shall be applicable. When received during tender phase treat as confidential.
DRW TITLE	Neutral Beam H&GD System HN801 injector	DRAWN BY	IRA200W	ITER
DATE OF ISSUE	06 Jul 23	SAFETY CLASS	NSR	
DR STATUS	W	QUALITY CLASS	QC-2	
SCALE	1:10	DOCUMENT TYPE	Part Drawing	
THIRD ANGLE PROJECTION		FORMAT	PS NUMBER	DRAWING NUMBER
		A1	53 01 PM	06266402 03 --A

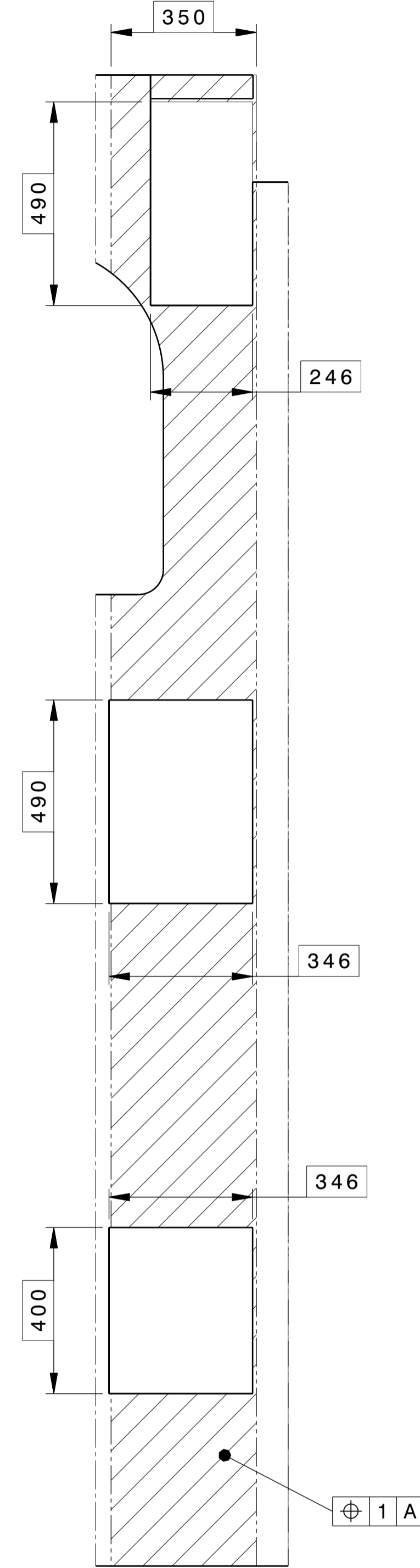
REAR VIEW



BOTTOM VIEW  
Scale: 1:10

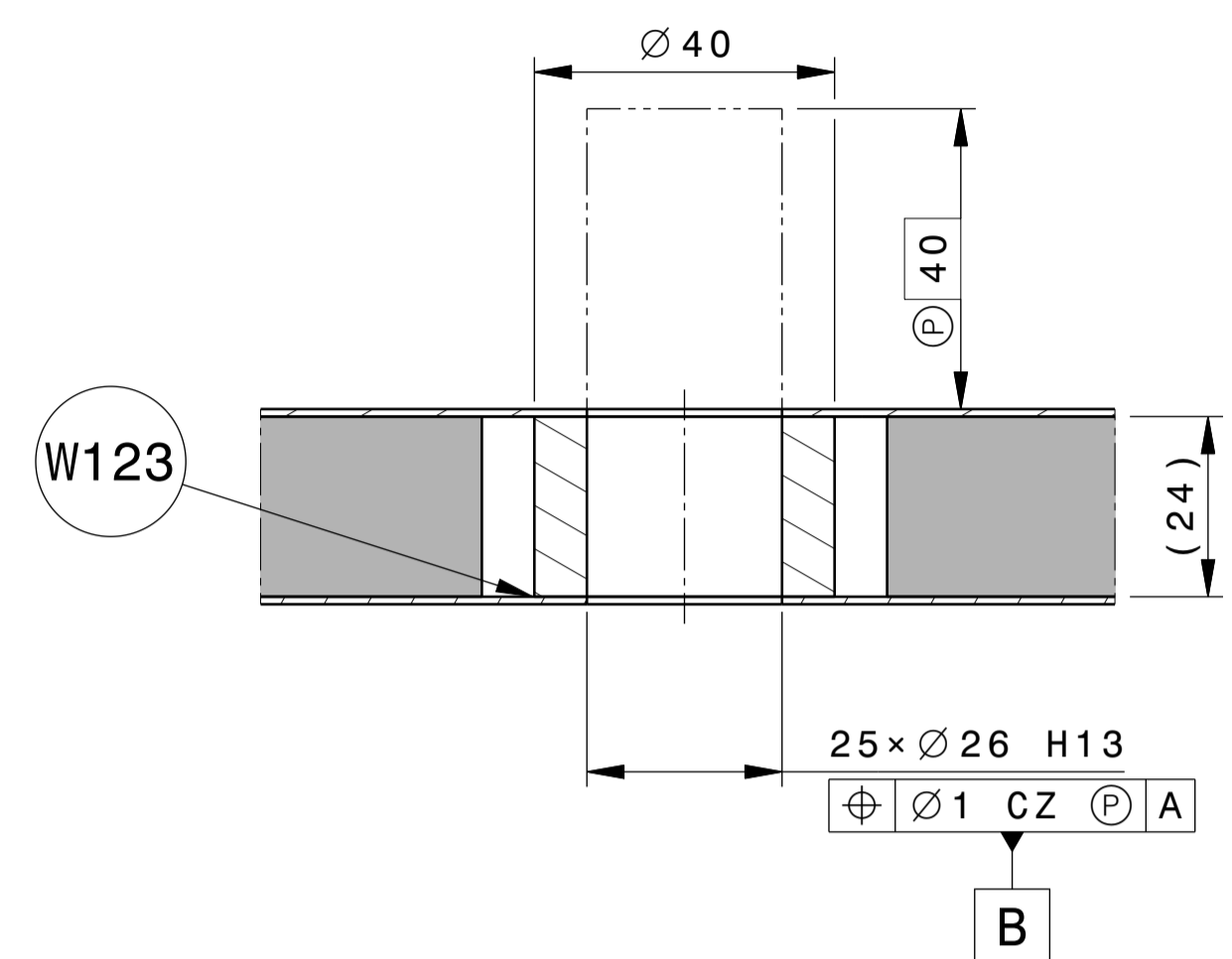


DETAIL E

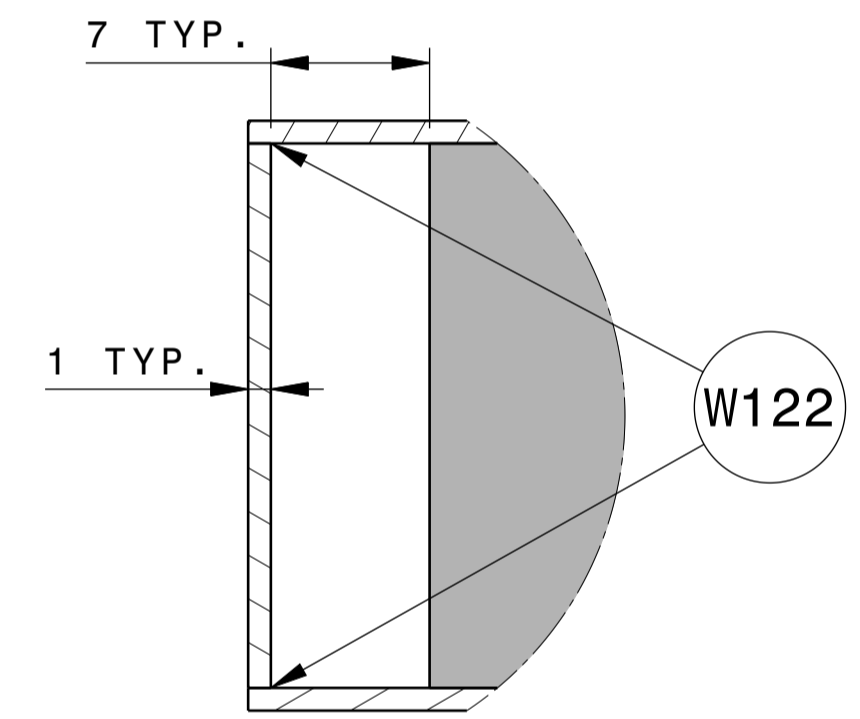


SECTION VIEW F-F  
Scale: 1:1

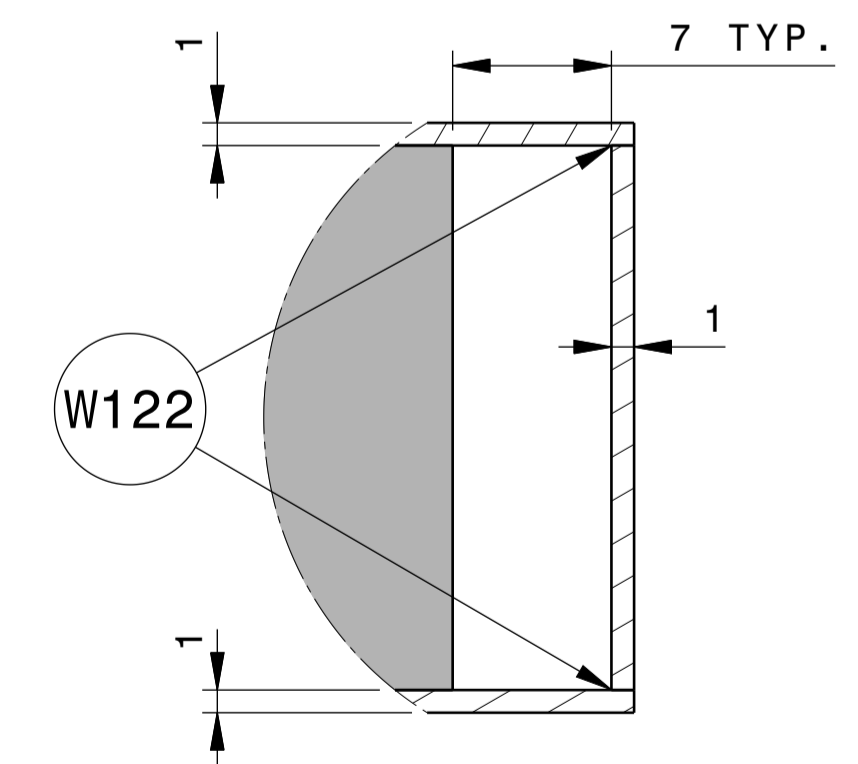
APPLICABLE 25 TIMES


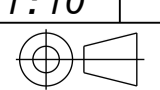


DETAIL G  
Scale: 3:1



DETAIL H  
Scale: 3:1



DRW CAD ID	4K7MVT	APPROVED BY	ITER Organization	LEGAL OWNER	
LINED REV PT ID	4U2555	ROTTIC	INTERNAL USE		
LINED 3D ID	4U25VR	TECHNICAL REF	When received pursuant to a contract or agreement, the confidentiality clause therein shall be applicable. When received during tender phase treat as confidential.		
DRW TITLE	Neutral Beam H&GD System HN801 injector Passive magnetic shield	ELOUAZA	DRAWN BY	ITERA200W	DRAWING TITLE
DATE OF ISSUE	06 Jul 23	NSR	SAFETY CLASS	NSR	SIDE_PMS_4L_CASING_LEAD_PLATE DETAIL_VIEWS
DR STATUS	W	SCALE	PT STATUS	W	QUALITY CLASS
SCALE	1:10	QC-2	DOCUMENT TYPE	Part Drawing	DOCUMENT TYPE
THIRD ANGLE PROJECTION		FORMAT	PMS NUMBER	A1 53 01 PM	DRAWING NUMBER
				062664	SHEET
				03	N° OF SHEETS
				03	REVISION
				--A	

Spacereservation for the banner