
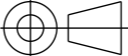


	1	2	3	4	5	6	7	8					
A													
B													
C													
D													
E					--A	UPDATED ACCORDING TO WP --B		23 May 23					
					---	FIRST EDITION		05 Apr 22					
F					REV No.	DETAILS OF MODIFICATION	SHEET No.	GRID REF	DATE	DCR No.			
					DRW CAD ID	4JYKGS	APPROVED BY	ITER Organization		LEGAL OWNER			
					LINKED EV5 PT ID	4U254M	ROTTIC	INTERNAL USE		 <small>china EU india japan korea russia USA</small>			
					LINKED 3D ID	4U25U9	TECHNICAL REF	When received pursuant to a contract or agreement, the confidentiality clause therein shall be applicable.					
					PBS TITLE	Neutral Beam H&CD System HNB01 injector Passive magnetic shield	ELOUAZA	When received during tender phase treat as confidential.					
					DATE OF ISSUE	23 May 23	PT MATURITY	DD	PT VERSION	--B			
					DR STATUS	W	SCALE	1:1	PT STATUS	W			
					THIRD ANGLE PROJECTION			FORMAT	PBS NUMBER	DRAWING NUMBER	SHEET	N°OF SHEETS	REVISION
								A3	53 01 PM	06263601	03	--A	

Spacereservation for the banner

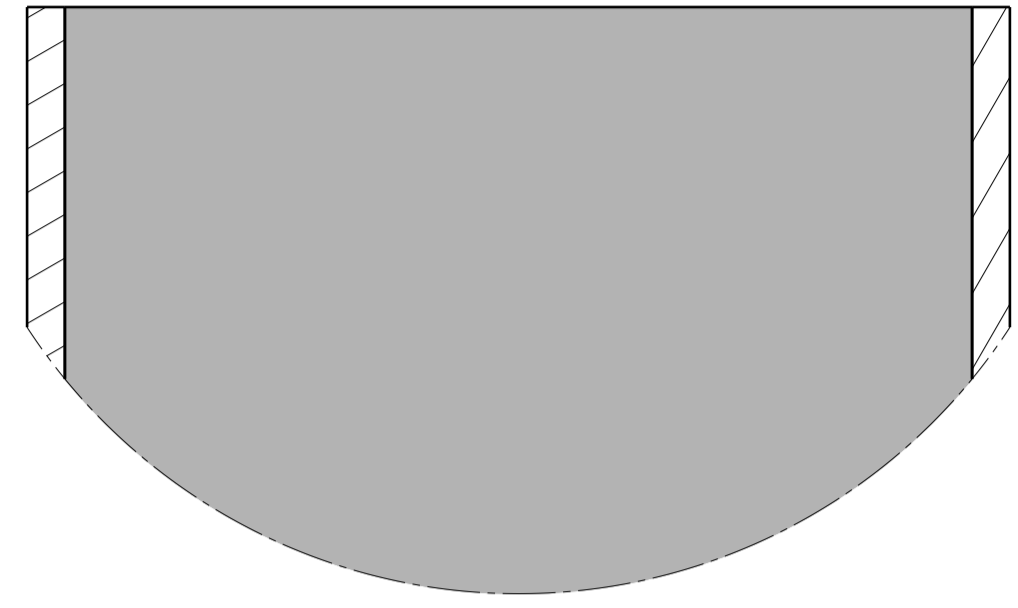
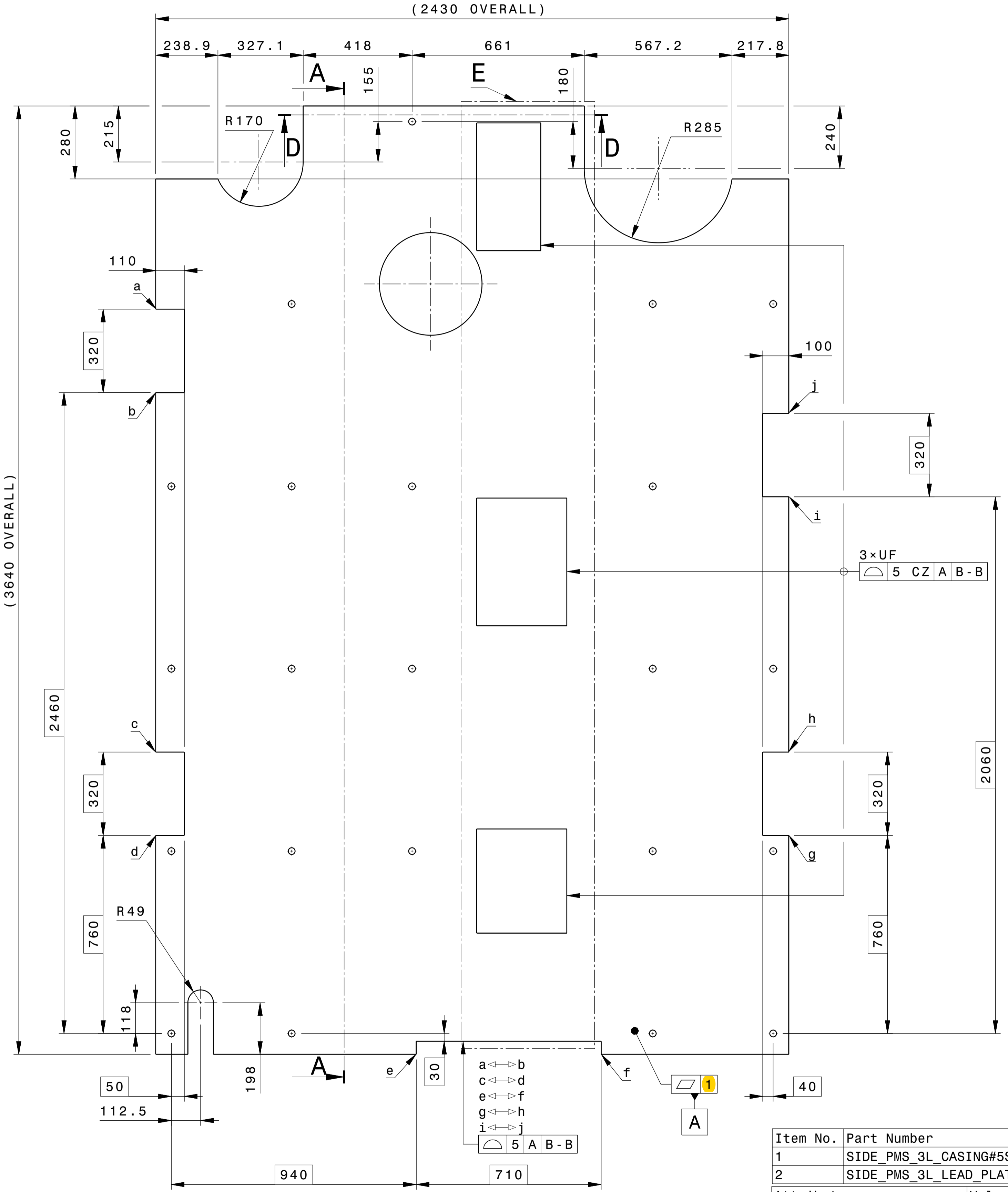
Spacereservation for the banner

FRONT VIEW

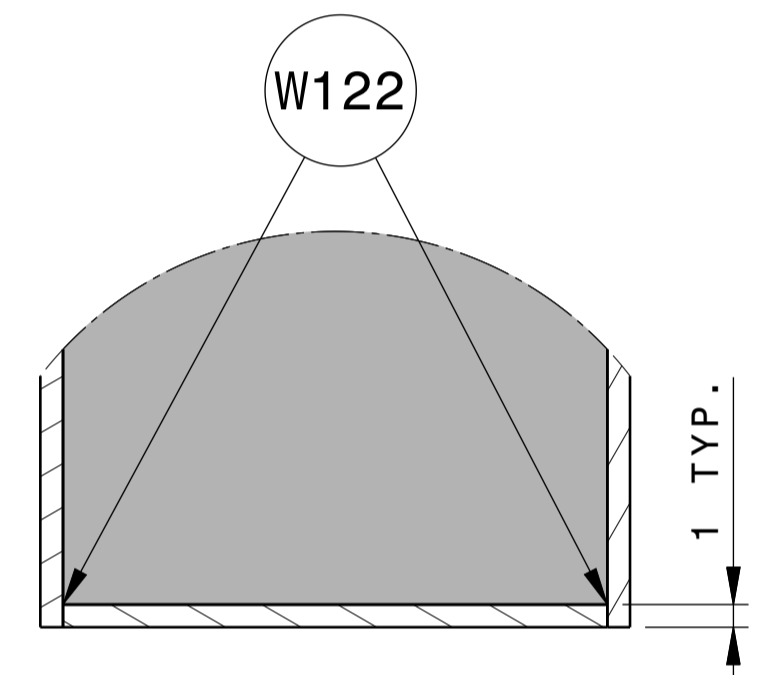
SECTION VIEW A-A

DETAIL B
Scale: 5:1

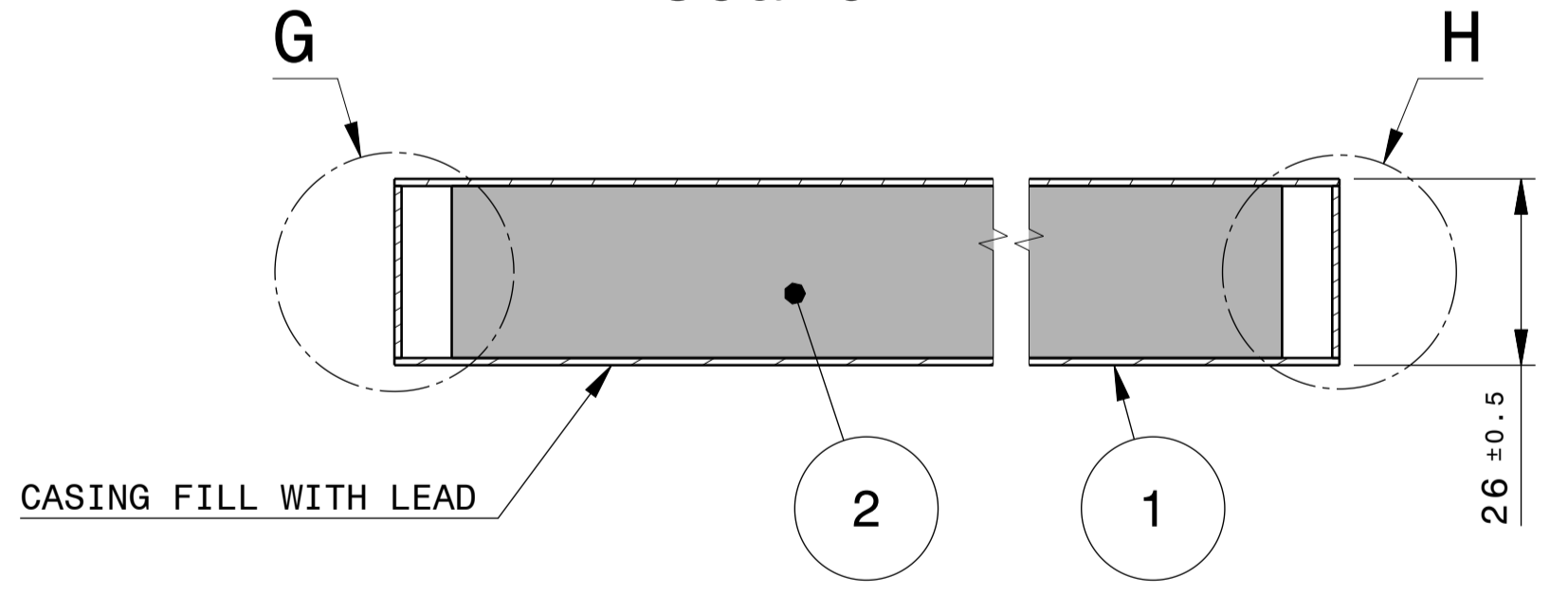
ISOMETRIC VIEW



DETAIL C
Scale: 3:1




SECTION VIEW D-D
Scale: 1:1



Note :
 1-Item ② is Cast lead in casing item ①.
 2-The welding details are given in the welding table ITER_D_7HMEAR.
 3-All dimensions could be controlled under constraints. Tooling could be used to achieve the constraint.

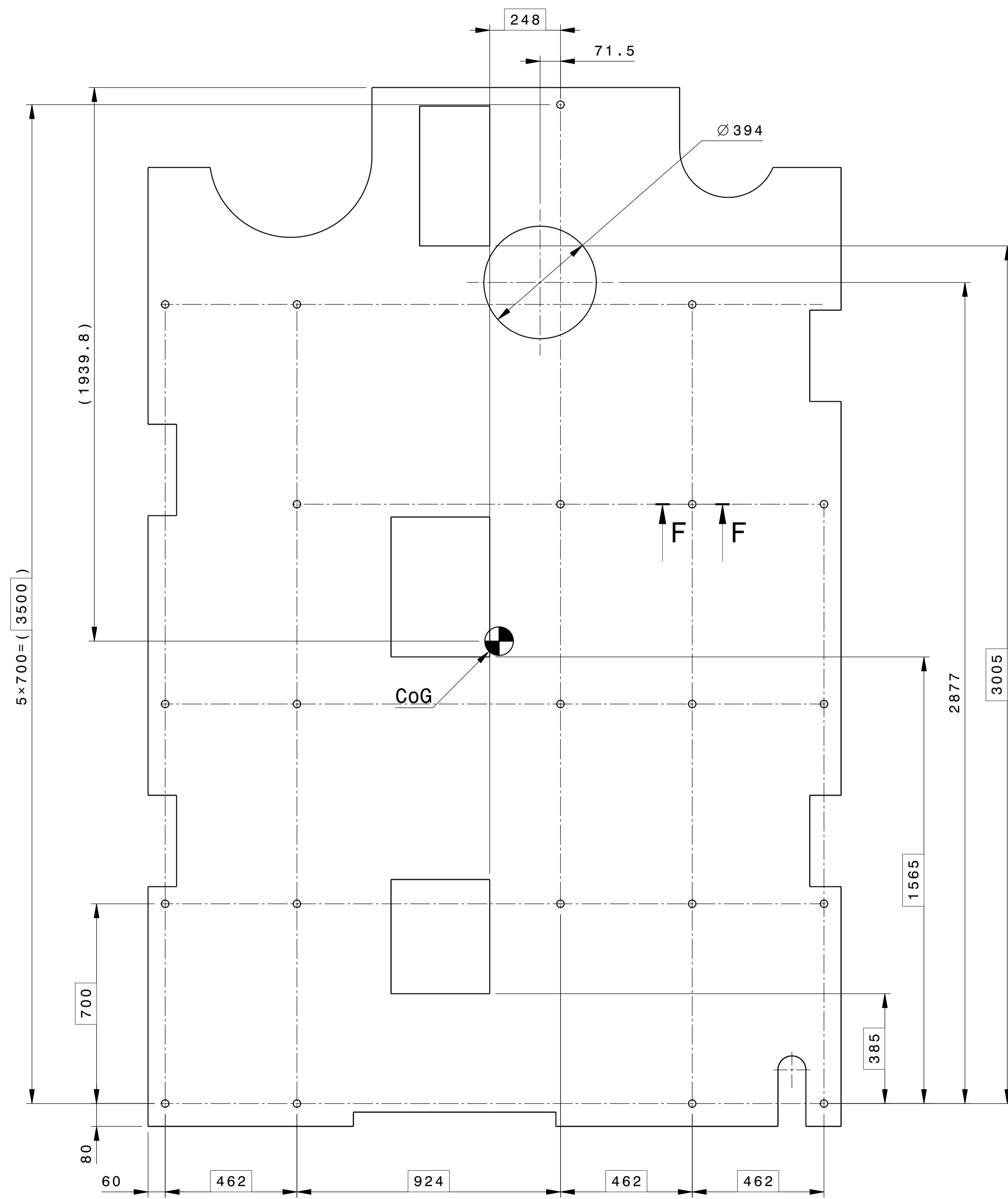
Item No.	Part Number	Revision	Material	Quantity	Weight
1	SIDE_PMS_3L_CASING#5SRQG5	---	304L	1	129kg
2	SIDE_PMS_3L_LEAD_PLATE#Q5E8YZ	--D	Lead	1	2015kg

Attribute	Value	Remarks
Material	See BOM	
Mass	See BOM	
General tolerances, unless otherwise stated	ISO 22081:2021 3 A B-B	Tolerancing follow ISO 8015
Specific requirements	Break sharp edges	
Marking		

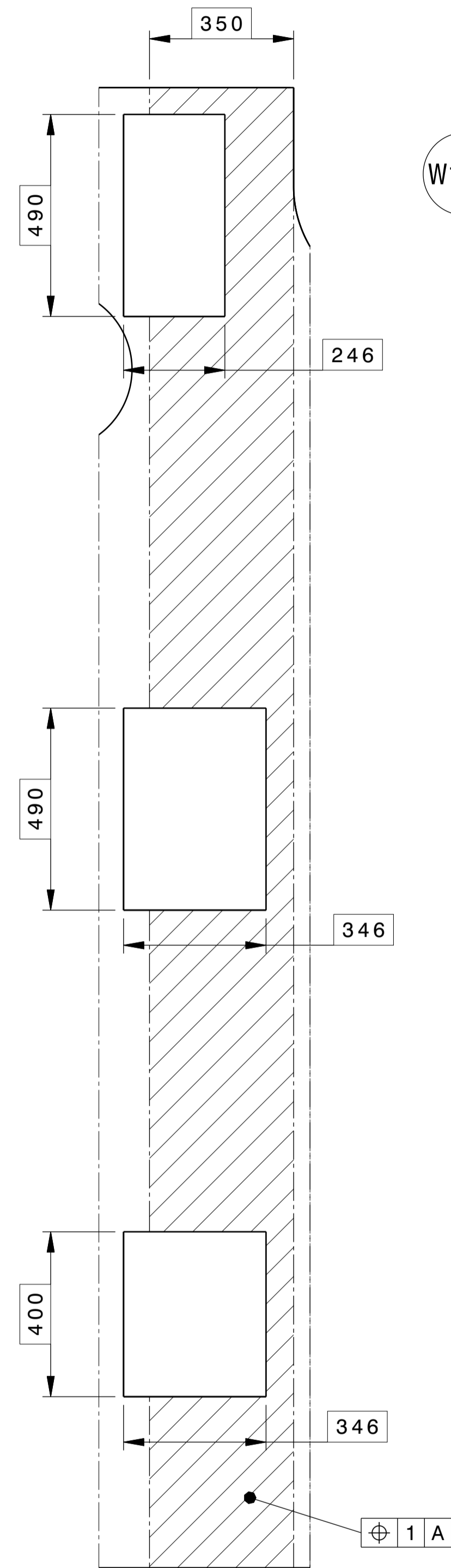
DRW CAD ID	4JYKGS	APPROVED BY	ITER Organisation	LEGAL OWNER
LINED REV PT ID	4U254M	ROTTIC	INTERNAL USE	
LINED 3D ID	4U25U9	TECHNICAL REF	When received pursuant to a contract or agreement, the confidentiality clause therein shall be applicable. When received during tender phase treat as confidential.	
DRW TITLE	Neutral Beam H&GD System HN801 injector Passive magnetic shield	ELOUAZA		
DATE OF ISSUE	23 May 23	NSR	DRAWING TITLE SIDE_PMS_3L_CASING_LEAD_PLATE MAIN_VIEWS	
DR STATUS	W	QC-2	DOCUMENT TYPE Part Drawing	
SCALE	1:10	FORMAT	PART NUMBER A1 53 01 PM 06263602 03	
PROJECTION	THIRD ANGLE	REVISION	SHEET 03	

Spacereservation for the banner

REAR VIEW



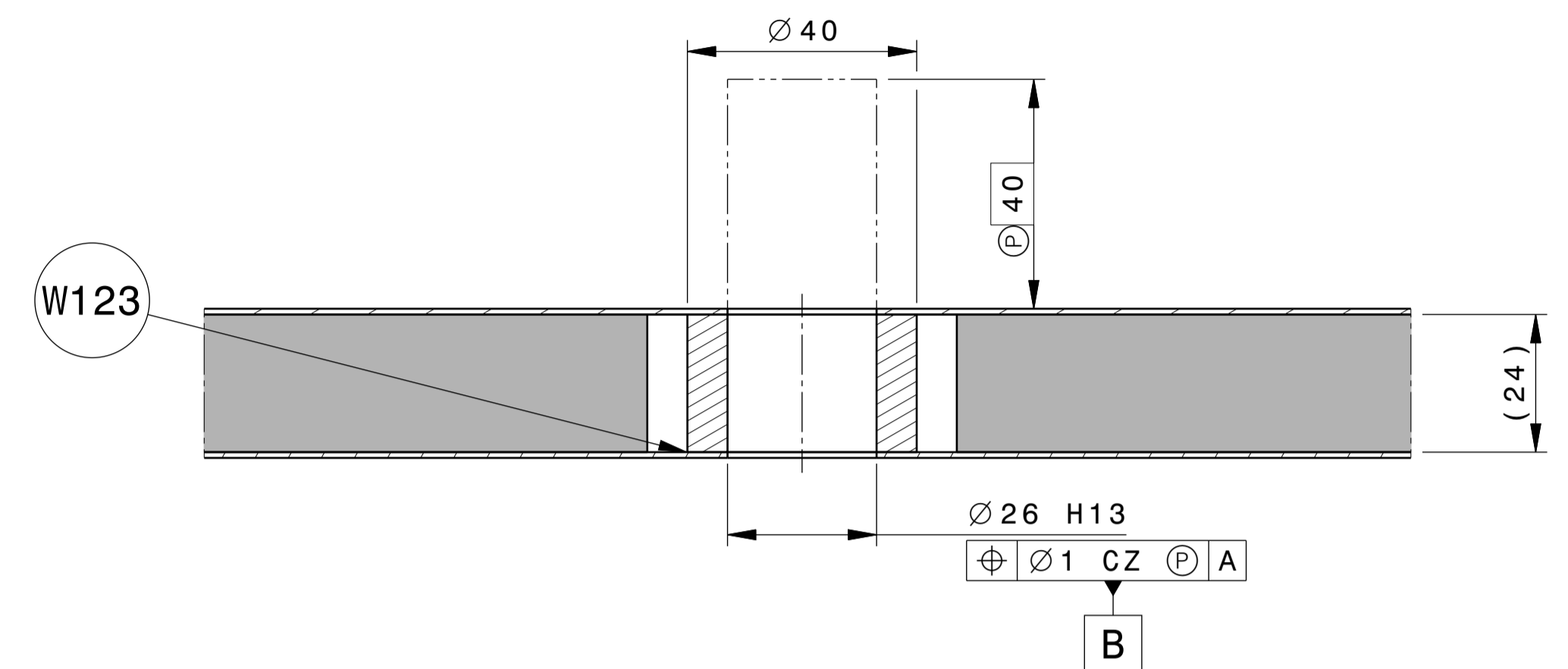
DETAIL E



SECTION VIEW F-F

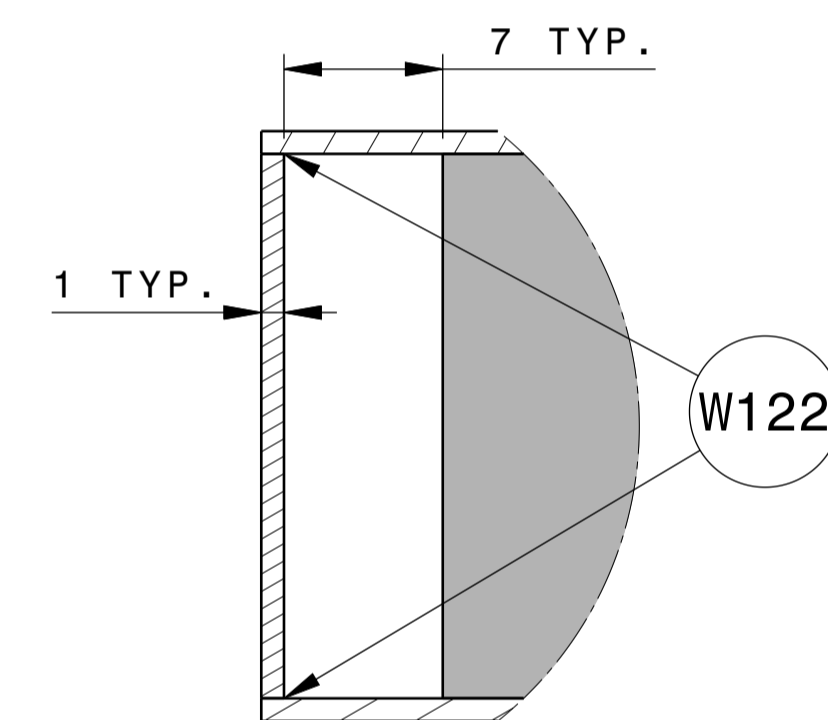
Scale: 1:1

APPLICABLE 22 TIMES



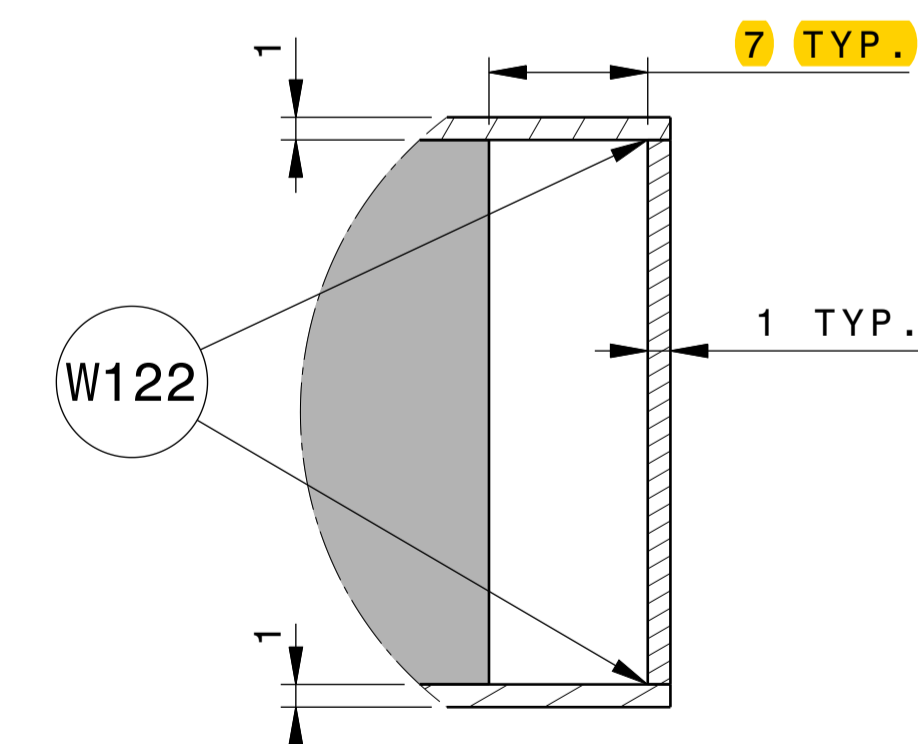
DETAIL G

Scale: 3:1



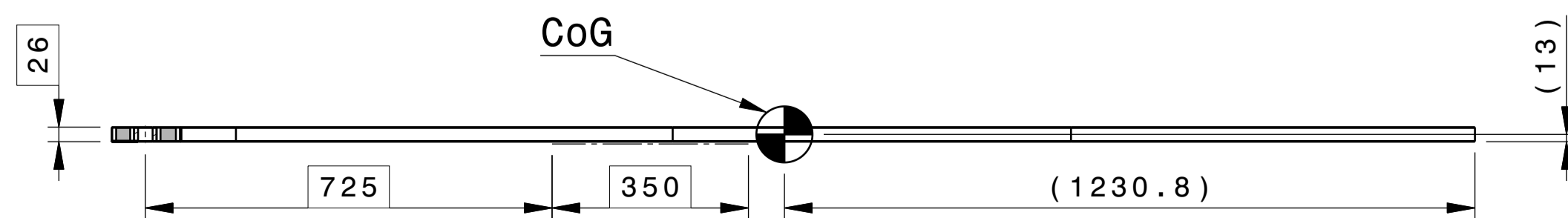
DETAIL H

Scale: 3:1



BOTTOM VIEW

Scale: 1:10



DRW CAD ID	4JYKGS	APPROVED BY	ITER Organization	LEGAL OWNER	
LINED RVS PT ID	4U254M	ROTTIC	INTERNAL USE		
LINED 3D ID	4U25U9	TECHNICAL REF	When received pursuant to a contract or agreement, the confidentiality clause therein shall be applicable.		
DRS TITLE	Neutral Beam H&D System	ELOUAZA	When received during tender phase treat as confidential.		
DATE OF ISSUE	23 May 23	NSR			
DR STATUS	W	QC-2			
SCALE	1:10	DOCUMENT TYPE	Part Drawing		
THIRD ANGLE PROJECTION		FORMAT	PM	DRAWING NUMBER	SHEET
		A1	53 01	062636	03 03



SIDE_PMS_3L_CASING_LEAD_PLATE
DETAIL_VIEWS

--A