



1 2 3 4 5 6 7 8

A

A

B

B

C

C

D

D

E



E

F

F

Spacereservation for the banner

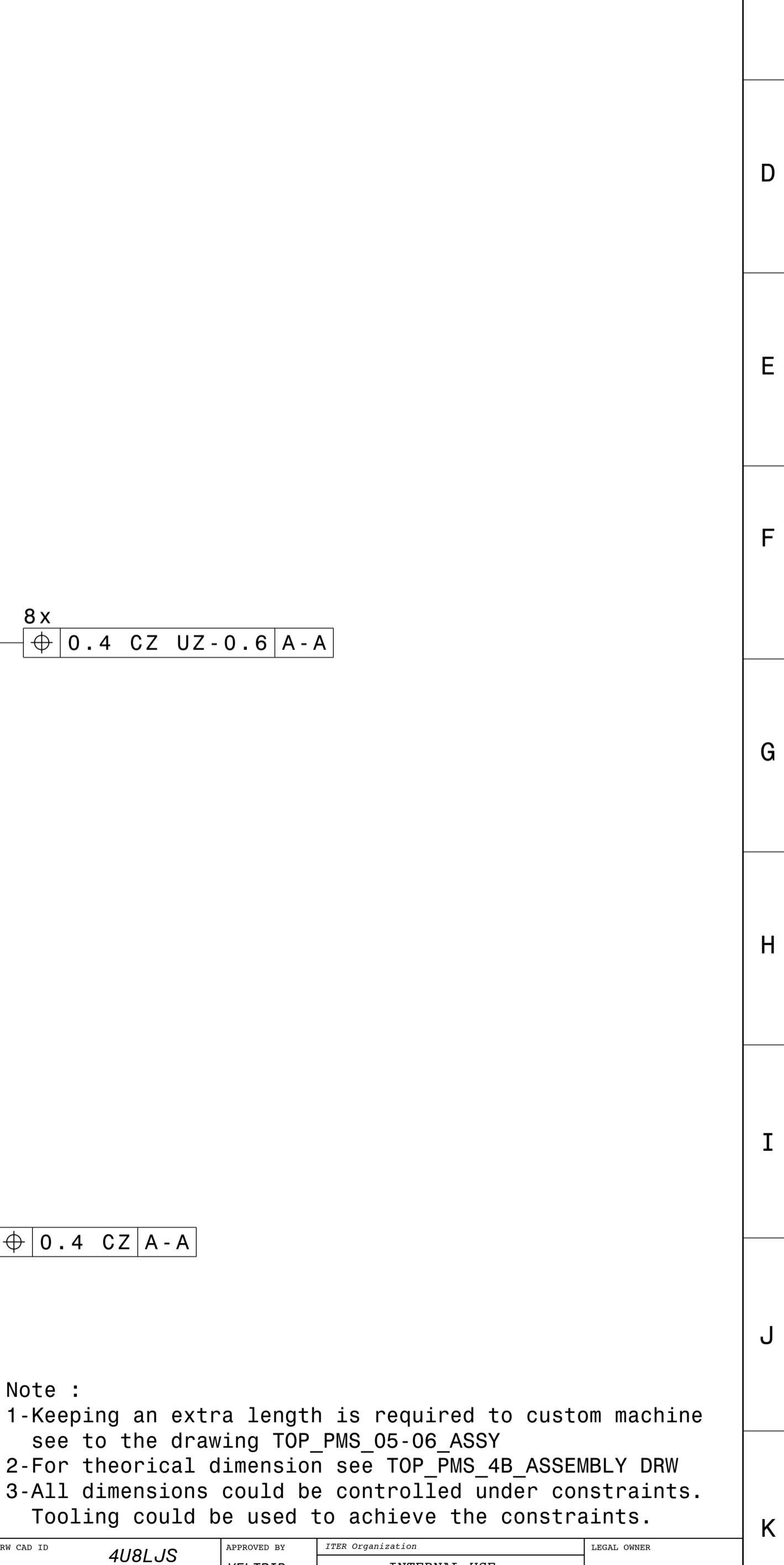
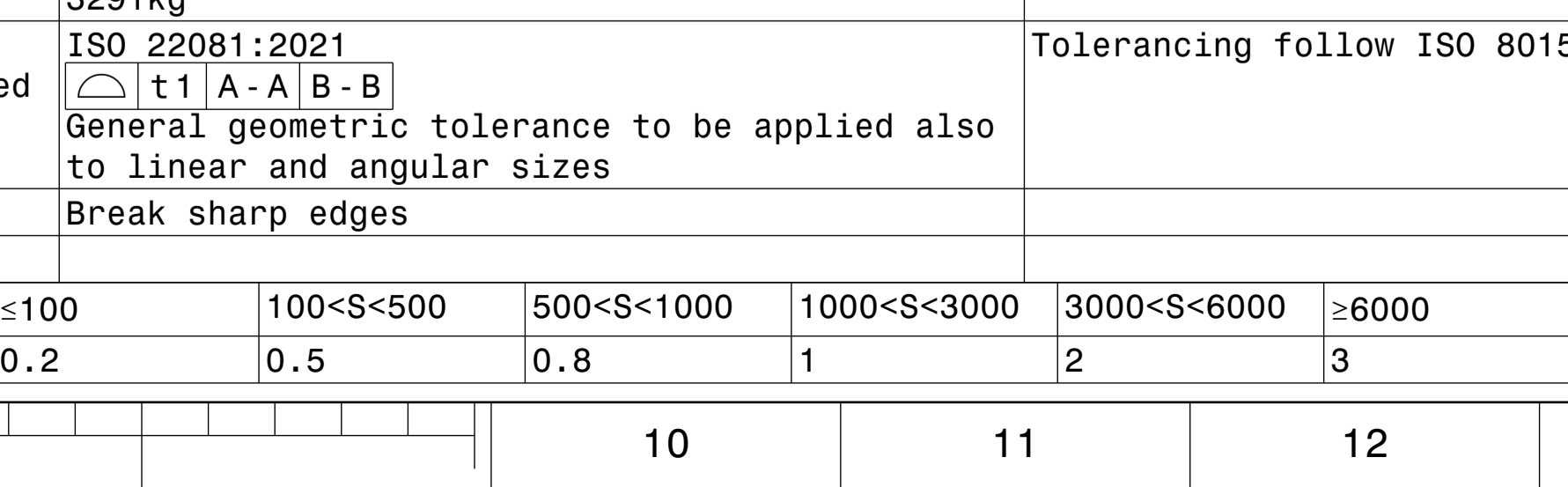
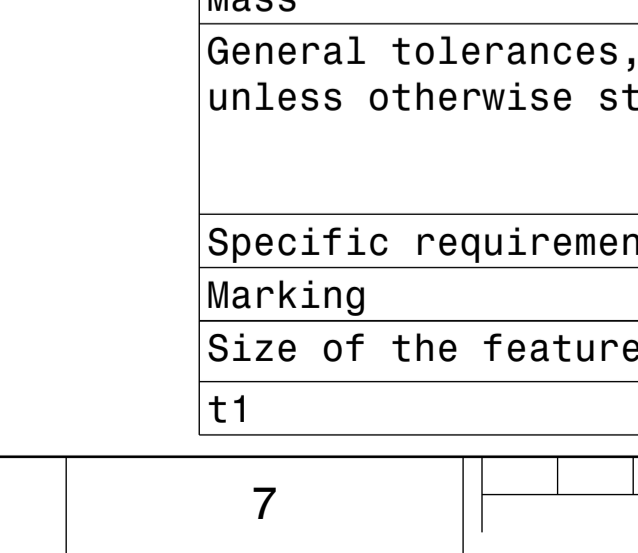
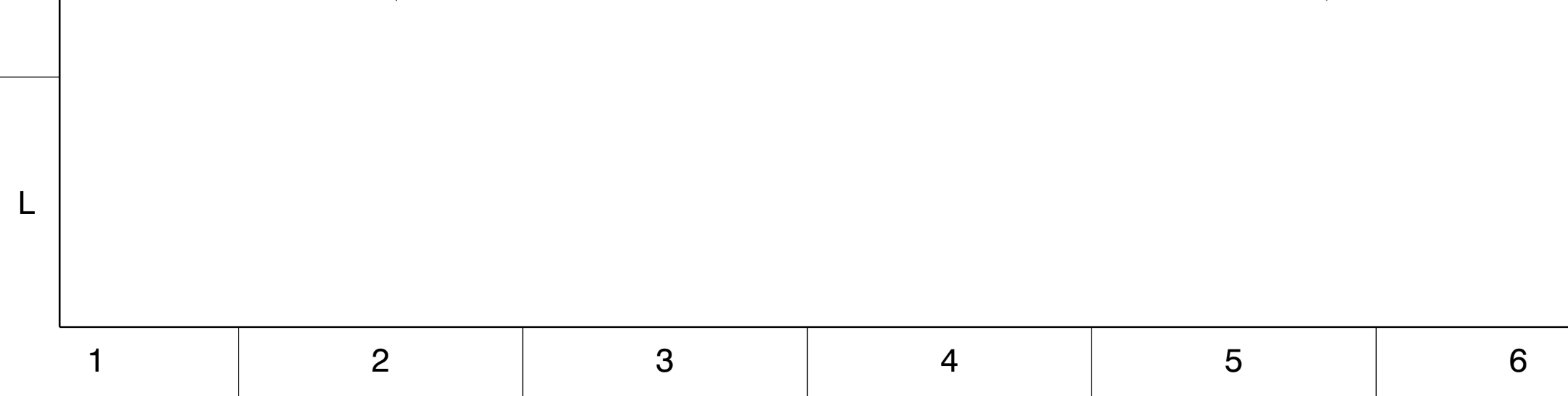
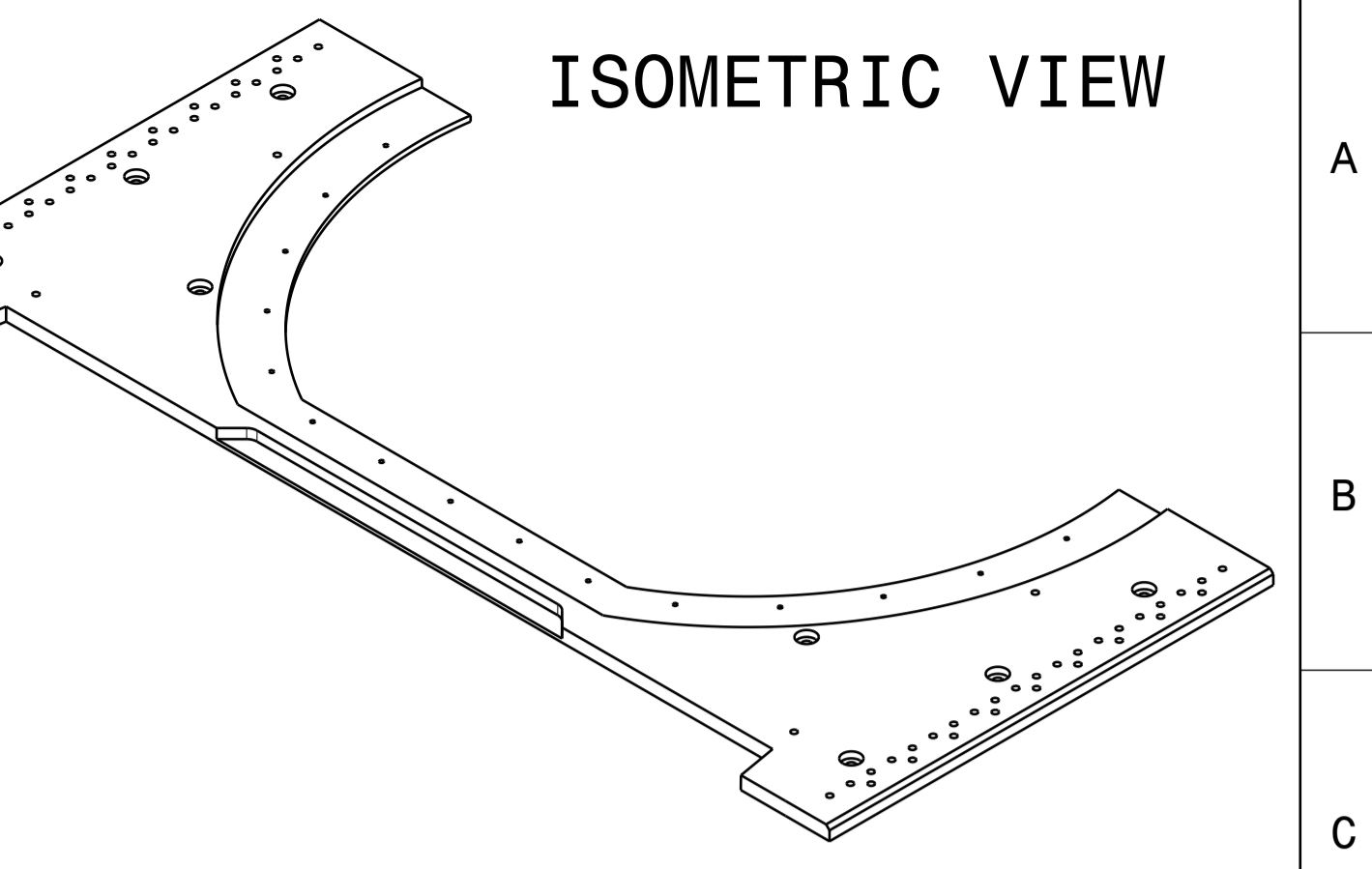
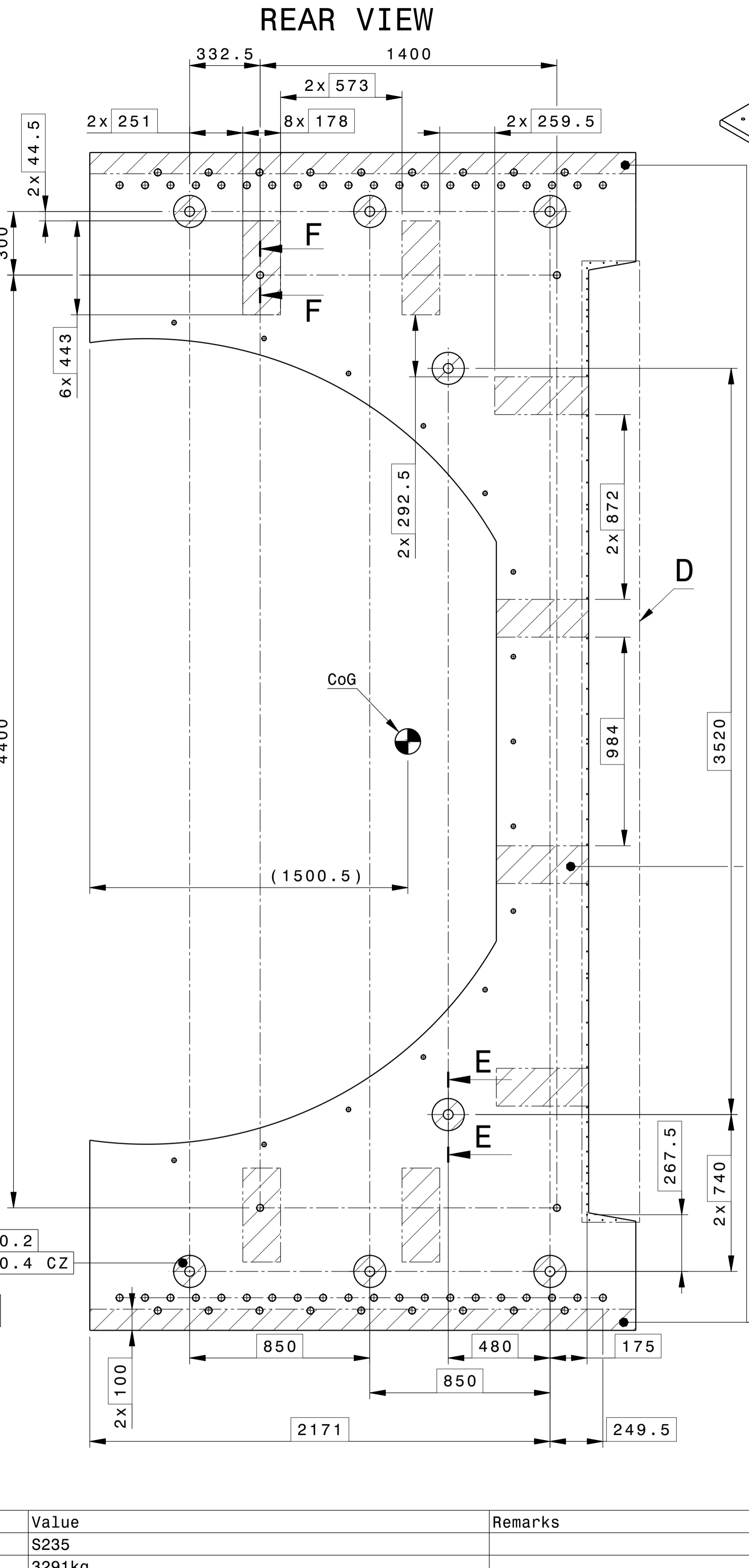
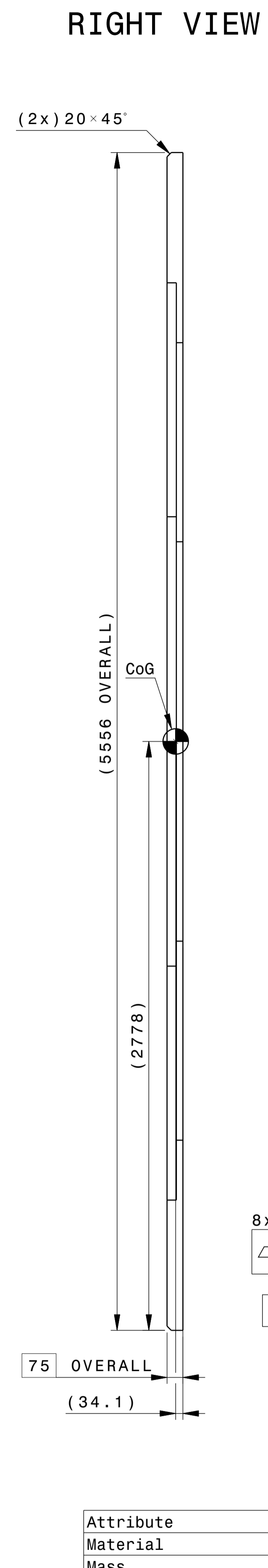
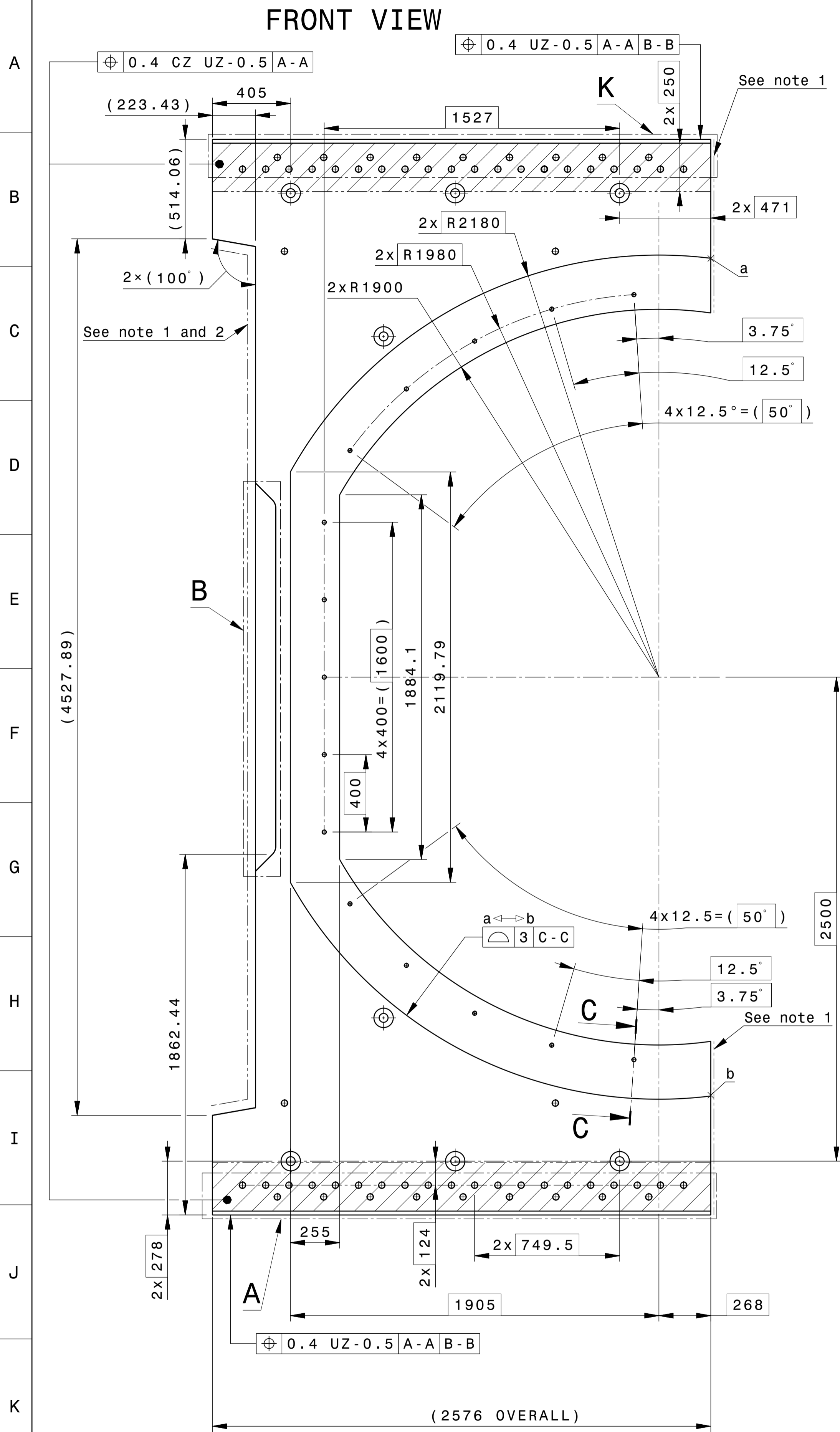
|     |                             |  |  |           |  |
|-----|-----------------------------|--|--|-----------|--|
| --A | UPDATED ACCORDING TO WP --B |  |  | 11 Oct 24 |  |
| --- | FIRST EDITION               |  |  | 09 May 22 |  |

| REV No. | DETAILS OF MODIFICATION |   |             |  | SHEET No.                                 | GRID REF   | DATE  | DCR No.     |          |
|---------|-------------------------|---|-------------|--|---|--|-------|-------------|----------|
|         | DRW CAD ID              | 4U8LJS  | APPROVED BY | ITER Organization  |   | LEGAL OWNER  |       |             |          |
|         | LINKED EV5 PT ID        | 4U25GF  | VELTRIP     | INTERNAL USE   |   | <br>china EU india japan korea russia USA |       |             |          |
|         | LINKED 3D ID            | 6FQBDV  | ELOUZA      | When received pursuant to a contract or agreement, the confidentiality clause therein shall be applicable.<br>When received during tender phase treat as confidential. |   |  |       |             |          |
|         | PBS TITLE               | Neutral Beam H&CD System<br>HNB01 injector<br>Passive magnetic shield                 |             | DRAWN BY   | DRAWING TITLE                             |  |       |             |          |
|         | DATE OF ISSUE           | PT MATURITY   | PT VERSION  | IRAZOQN  | TOP_PMS_05_OUTSIDE<br>MODIFICATIONS_SHEET |  |       |             |          |
|         | DR STATUS               | SCALE   | PT STATUS   | SR   | DOCUMENT TYPE                             |  |       |             |          |
|         | C                       | 1:1   | D           | QC-2   | Part Drawing                              |  |       |             |          |
|         | THIRD ANGLE PROJECTION  |  |             | FORMAT   | PBS NUMBER                                | DRAWING NUMBER   | SHEET | N°OF SHEETS | REVISION |
|         |                         |   |             | A3   | 53 01 PM                                  | 06282101   | 03    | --A         |          |

| REV No. | DETAILS OF MODIFICATION |  |  |  | SHEET No. | GRID REF | DATE | DCR No. |
|---------|-------------------------|--|--|--|-----------|----------|------|---------|
|         |                         |  |  |  |           |          |      |         |

1 2 3 4 5 6 7 8

Spacereservation for the banner



Note :  
 1-Keeping an extra length is required to custom machine see to the drawing TOP\_PMS\_05-06\_ASSY  
 2-For theoretical dimension see TOP\_PMS\_4B\_ASSEMBLY DRW  
 3-All dimensions could be controlled under constraints. Tooling could be used to achieve the constraints.

| Attribute                                   | Value                                 | Remarks                     |
|---|---------------------------------------|-----------------------------|
| Material                                    | S235                                  |                             |
| Mass  | 3291kg                                |                             |
| General tolerances, unless otherwise stated | ISO 22081:2021<br>$\Delta t1$ A-A B-B | Tolerancing follow ISO 8015 |
| Specific requirements                       | Break sharp edges                     |                             |
| Marking                                     |                                       |                             |
| Size of the feature                         | ≤100                                  | 100<S<500                   |
| t1  | 0.2                                   | 0.5                         |

|                        |  |               |                   |                |                                  |
|------------------------|--|---------------|-------------------|----------------|----------------------------------|
| DRW CAD ID             | 4U8LJS   | APPROVED BY   | ITER Organization | LEGAL OWNER    |                                  |
| LINED RVS PT ID        | 4U25GF   | TECHNICAL REF | ITER Organization |                |                                  |
| LINED 3D ID            | 6FQBDV   | ELOUAZA       |                   |                |                                  |
| DRW TITLE              | Neutral Beam H&D System<br>HNBO1 injector<br>Passive magnetic shield | DRAWN BY      | ITER Organization | DRAWING TITLE  | TOP_PMS_05_OUTSIDE<br>MAIN_VIEWS |
| DATE OF ISSUE          | 11 Oct 24  | DD            | --B               | SAFETY CLASS   | SR                               |
| DR STATUS              | C  | SCALE         | 1:15              | QUALITY CLASS  | QC-2                             |
| THIRD ANGLE PROJECTION |  | FORMAT        | PM                | DOCUMENT TYPE  | Part Drawing                     |
|                        |  | FORM          | A1 53 01 PM       | DRAWING NUMBER | 062821 02 03                     |

